

# DYNAPAC®

## DRIVING INSTRUCTIONS

### VIBRATING ROLLER CA 25

Caterpillar dieselmotor D3208 NA  
Deutz dieselmotor F6L 912

CONTENTS	Cat.		Deutz	
		Page		Page
Before starting .....	2	7	Parking .....	6 11
Starting .....	3	8	Vibration/Driving .....	6 11
Driving .....	4	9	Lifting instructions .....	12 12
Braking .....	5	10	Operating after lifting ...	13 13
Stopping .....	5	10	Safety recommendations ....	14 14

1 Hydraulic oil filter	10 Ammeter (Cat.)	17 Horn button
2 Handbrake	11 Amplitude selector valve	18 Vibration and amplitude control
3 Driver's seat	12 Warning lamp, hand-brake	19 Stop control (Deutz)
4 Gear selector	13 Starter switch	20 Battery charging lamp (Deutz)
5 Foot brake	14 Tachometer	21 Amplitude selector
6 Throttle	15 Forward/reverse lever	22 Vibration switch
7 Coolant temp. gauge (Cat.)	16 Oil press. warning lamp	
8 Hydr. oil temp. gauge		
9 Fuel gauge		

KP-nyck 03 85 100

# ↓ DYNAPAC

P. O. Box 1103 · S-171 22 SOLNA · SWEDEN  
Tel. 08-98 80 00 · Cables DYNAPAC, STOCKHOLM · Telex 19531 DYSNOL S

We reserve the right to change specifications without notice

0-10055-3 Eng  
Replaces  
0-10055-2 Eng

# CATERPILLAR D 3208 ENGINE

## BEFORE STARTING

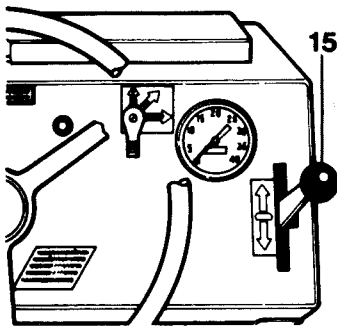
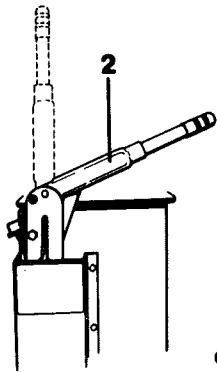


Fig. 1

- 1 Ensure daily maintenance has been carried out (see the maintenance instructions).
- 2 Move the forward/reverse lever (15) to the NEUTRAL position. The diesel engine cannot be started when the lever is in any other position.



CA 25-12241-1

Fig. 2

- 3 Apply the handbrake (2) by pulling up the lever.

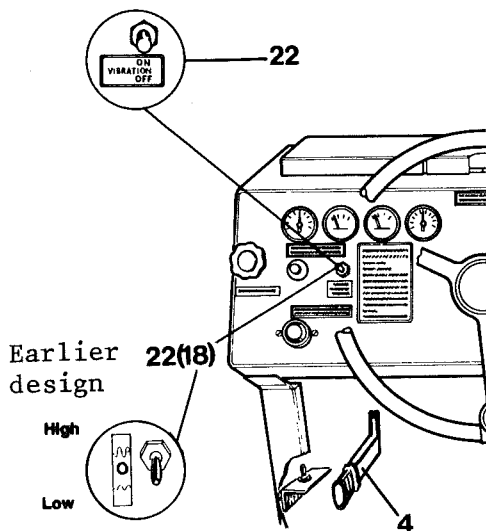


Fig. 3

- 4 Move the vibration switch (22) to OFF.  
(For rollers equipped with a vibration control (18) move the control to the 0 position.)
- 5 Check that the gear (4) is engaged - see the sticker on the instrument panel.

## STARTING

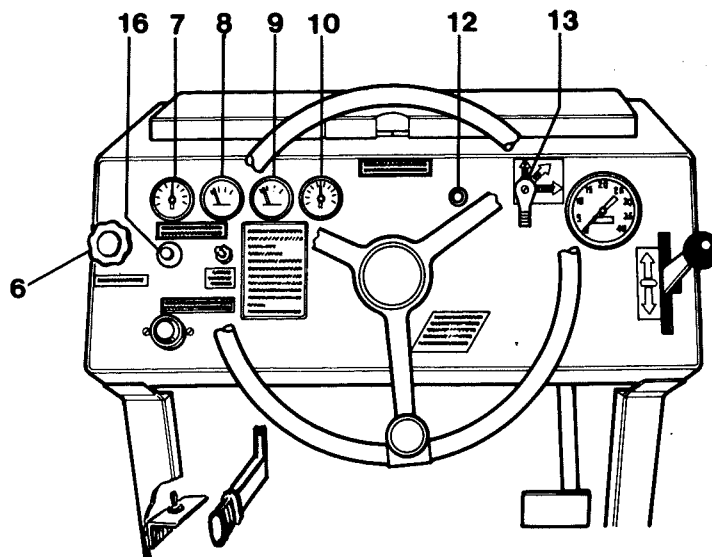


Fig. 4

- 1 Set throttle (6) to about 1/3 full throttle.
- 2 Turn the starter switch (13) to the "ON" position.

Ensure the temperature gauge (7), oil temperature gauge (8) and fuel gauge (9) indicate readings and that the oil pressure warning lamp (16) and the handbrake warning lamp (12) light up.

If the horn sounds, set the forward/reverse lever to STOP so that it ceases.

- 3 Depress and turn the starter switch (13) to START and hold it there until the engine fires. Do not keep the starter motor engaged for more than about 10 seconds.

When starting the engine at temperatures below  $-12^{\circ}\text{C}$  ( $10^{\circ}\text{F}$ ), a small amount of starter gas may be sprayed into the air cleaner before starting the engine.

*If the engine does not start, pause briefly before attempting to start it again.*

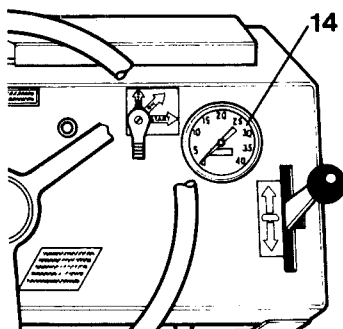


Fig. 5

- 4 Warm up the engine by running it at 800-1000 rpm (14) for 2-10 min, depending on the air temperature.
- 5 While warming up the engine, ensure the ammeter (10), fig. 4, points to + and that the oil pressure warning lamp (16), fig. 4, has gone out.

# DRIVING

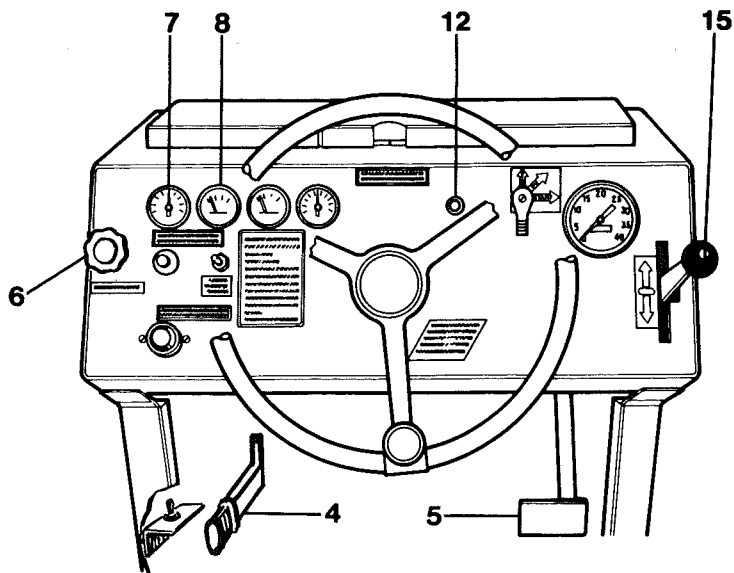


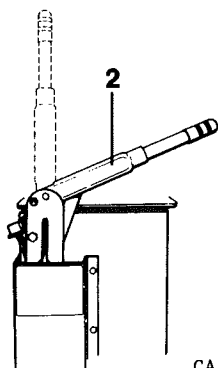
Fig. 6

- 1 Open the throttle (6) until the engine runs at a speed of 2400 rpm.
- 2 Ensure the steering system is in working order by turning the steering wheel one revolution to the right and one to the left whilst the roller is stationary.
- 3 Move the gear selector (4) to the desired position (see the sticker on the instrument panel).
  - Pos. 1 = working position  
max. speed 6 km/h (6 km/h)
  - Pos. 2 = road transport position  
max. speed 12 km/h (9 km/h)
  - Pos. 3 = road transport position  
max. speed 23 km/h (12 km/h)

*Position 3 should only be used when driving on smooth straight roads.*

The values in brackets apply to CA 25D and CA 25 PD machines.

The roller speed is regulated using the forward/reverse lever (15), fig. 6, (which is also the normal brake for stopping the roller).

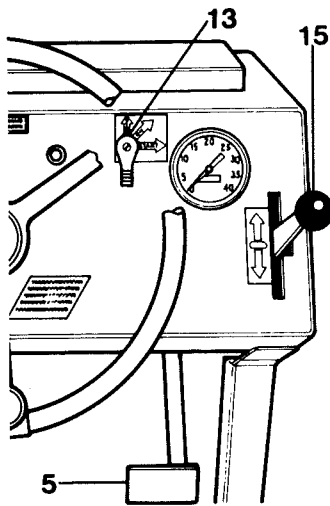


CA 25-12241-1

- 4 Release the handbrake (2), by moving the lever forward and down. This should cause the handbrake warning lamp (12), fig. 6, to go out.
- 5 Move the forward/reverse lever (15), fig. 6, to the desired setting. Control the speed of the roller with this lever. The roller will be brought to a halt by moving this lever to NEUTRAL.
- 6 While driving, ensure the gauges show normal readings and that the warning lamps do not light up. The maximum hydraulic oil temperature (8) should not exceed 82°C (approx. 185°F). Maximum coolant temperature (7 in fig. 6) 100°C (approx. 210°F).
- 7 Ensure the foot brake, fig. 6, is in proper working order (see the maintenance instructions).

Caterpillar 3208 NA

## BRAKING



### Normal braking while driving

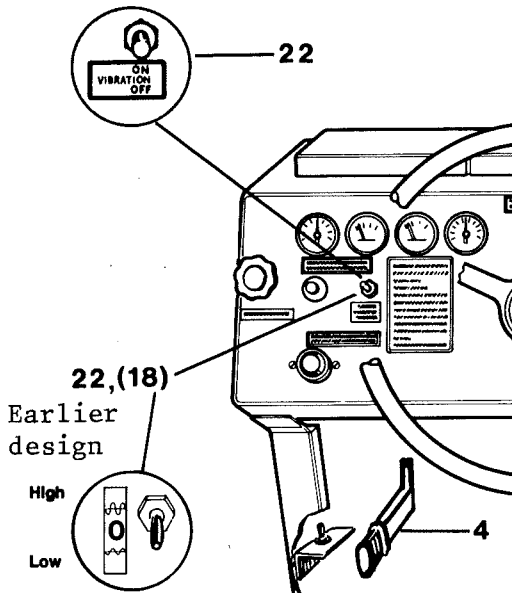
Normal braking is carried out by means of the forward/reverse lever (15). The hydrostatic transmission will slow down the roller when the lever is moved to the "NEUTRAL" position.

### Emergency braking

The roller is equipped with a foot brake (5) that acts on the drum brakes on the rear wheels to bring the roller to a halt quickly in emergency situations.

Fig. 8

## STOPPING

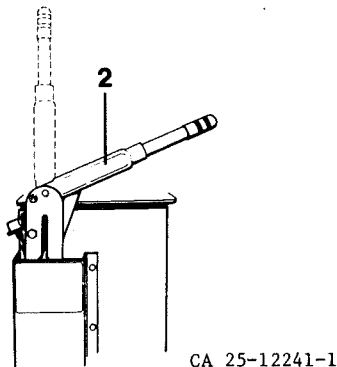


- 1 Set the vibration switch (22) to the "OFF" position.

(On certain rollers, amplitude selection is carried out on the instrument panel. Set the selector (18) to the 0 position).

- 2 Move the forward/reverse lever (15), fig. 8, to the "NEUTRAL" position.

Fig. 9



- 3 Apply the handbrake (2).

- 4 Run the engine at idling speed for about 5 minutes to allow the engine temperature to fall.

- 5 Set the starter switch (13), fig. 8, to the "STOP" position.

Fig. 10

## PARKING

Never leave the roller with the diesel engine running.

## VIBRATION

### Driving

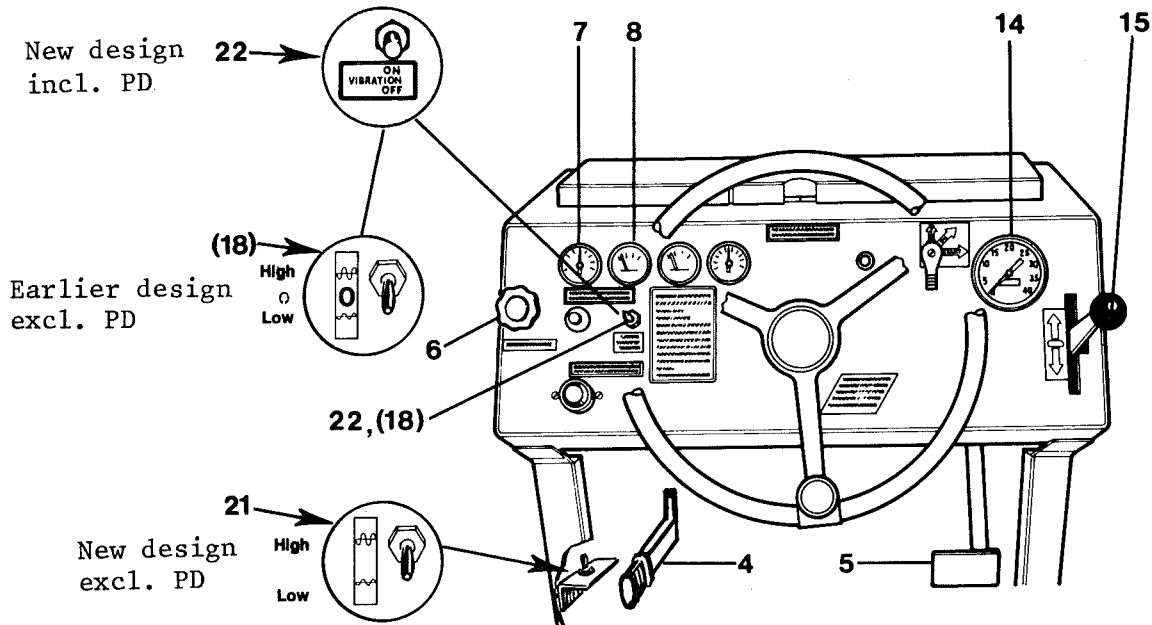


Fig. 11

When parking on an incline, use a stone or suchlike to chock the drum.

- 1 Ensure the vibration switch (22) is in the OFF position. Check the amplitude setting (21) at the same time. (On earlier machines, set (18) to 0).

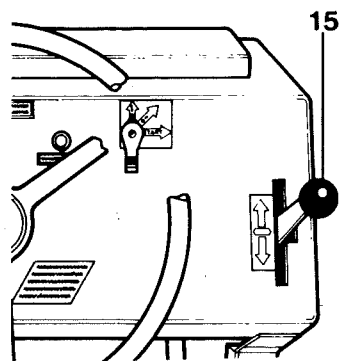
*Never move the amplitude selector between "high" and "low" amplitude when the vibration switch is on - wait a few seconds before altering the amplitude.*

- 2 Move the gear selector (4) to position 1.
- 3 Adjust the throttle (6) until the tachometer (14) reads 2400 r/min. Carry out fine adjustment of the speed by turning the upper part of the throttle (6).
- 4 Move the forward/reverse lever (15) to the desired direction of travel and regulate the speed of the roller with this lever.
- 5 Use the vibration switch (22) to engage vibration *when the roller is in motion*. (Use (18) to engage vibration on earlier designs). If the engine speed falls, increase it to 2400 rpm (6).
- 6 Do not disengage vibration when changing the direction of travel.

To change the direction of travel from forward to reverse (or vice versa), move the forward/reverse lever (15) slowly past the neutral position. The hydrostatic transmission ensures that the roller will be brought to a stop and change its direction of travel smoothly.

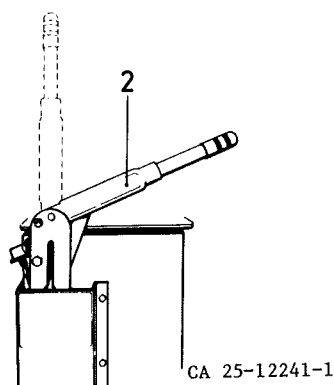
# DEUTZ F6L 912 ENGINE

## BEFORE STARTING



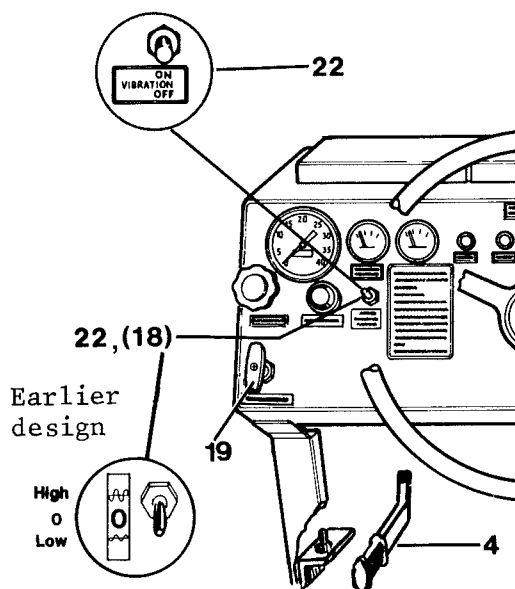
- 1 Ensure daily maintenance has been carried out (see the maintenance instructions).
- 2 Move the forward/reverse lever (15) to NEUTRAL. The diesel engine cannot be started when the lever is in any other position.

Fig. 12



- 3 Apply the handbrake (2) by pulling up the lever.

Fig. 13



- 4 Set the vibration switch (22) to OFF. (For rollers equipped with a vibration control (18), move the control to the 0 position.)
- 5 Check that the gear is engaged (4) - see the sticker on the instrument panel.

Fig. 14

## STARTING

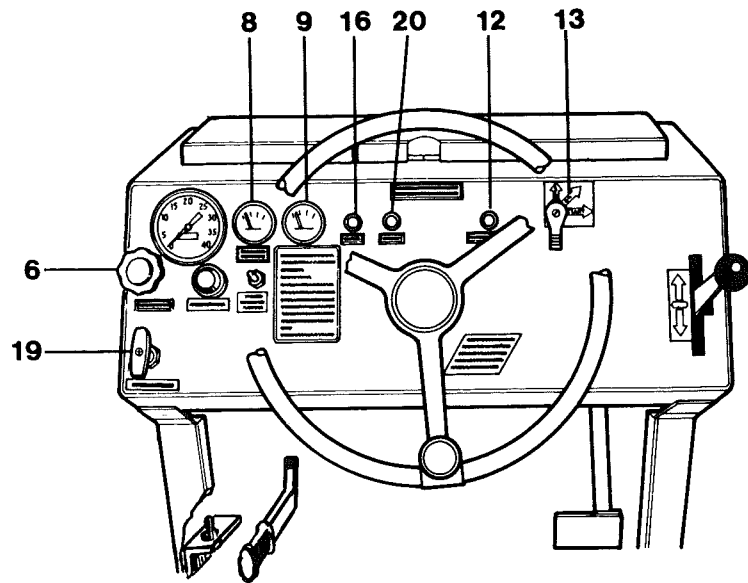


Fig. 15

- 1 Ensure the stop control (19) is fully pressed in.
- 2 Pull out the throttle (6) to about 1/3 full throttle.
- 3 Turn the starter switch (13) to ON.

Ensure the oil temperature gauge (8) and fuel gauge (9) indicate readings and that the oil pressure warning lamp (16) and handbrake warning lamp (12) light up.

If the horn sounds, set the forward/reverse lever to NEUTRAL so that it ceases.

- 4 Depress and turn the master switch (13) to START and hold it there until the engine fires. Do not keep the starter motor engaged for more than about 10 seconds.

When starting at temperatures below  $-12^{\circ}\text{C}$  ( $10^{\circ}\text{F}$ ) a small amount of starter gas may be sprayed into the air cleaner before starting the engine.

*If the engine fails to start, wait a short while before trying to start it again.*

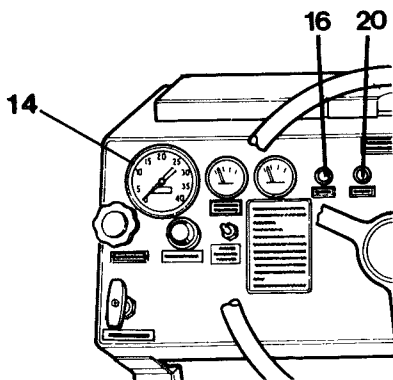


Fig. 16

- 5 Warm up the engine by running it at 800-1000 rpm (14) for 2-10 minutes, depending on the air temperature.

- 6 While warming up the engine, ensure the battery charging warning lamp (20) and the oil pressure warning lamp (16) have gone out.



**DRIVING**

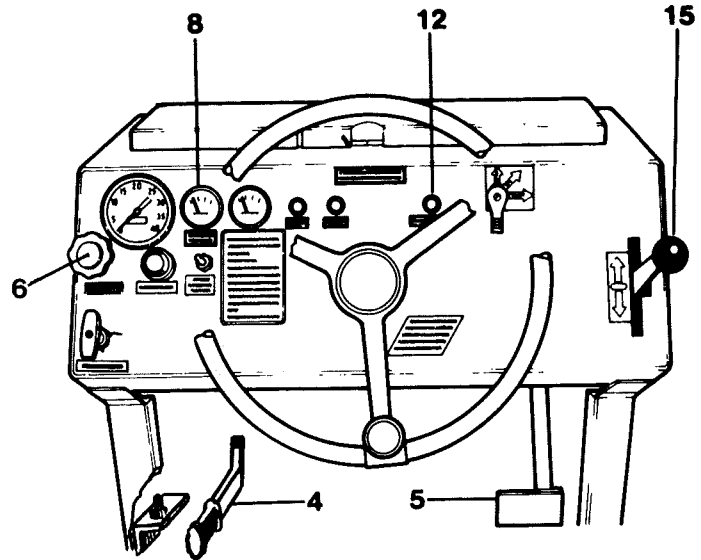


Fig. 17

- 1 Open the throttle (6) until the engine runs at a speed of 2400 rpm.
- 2 Ensure the steering is in working order by turning the steering wheel one revolution to the right and one to the left whilst the roller is stationary.
- 3 Move the gear selector (4) to the desired position (see the sticker on the instrument panel).
  - Pos. 1 = working position  
max. speed 6 km/h (6 km/h)
  - Pos. 2 = transport position  
max. speed 12 km/h (9 km/h)
  - Pos. 3 = transport position  
max. speed 23 km/h (12 km/h)

*Position 3 should only be used when driving on smooth straight roads.*

The values in brackets apply to CA 25D and CA 25PD machines.

The roller speed is regulated by the forward/reverse lever (15), (which is also the normal brake for stopping the roller).

- 4 Release the handbrake (2) by moving the lever forward and down. This should cause the handbrake warning lamp (12), fig. 17, to go out.
- 5 Move the forward/reverse lever (15) to the desired direction of travel. Regulate the speed of the roller with this lever. To bring the roller to a halt, move this lever to NEUTRAL.
- 6 While the roller is in motion, check that the gauges indicate normal values and that the warning lamps do not light up. The maximum hydraulic oil temperature (8) should not exceed 82°C (approx. 185°F).
- 7 Check that the foot brake (5) is in proper working order (see the maintenance instructions).

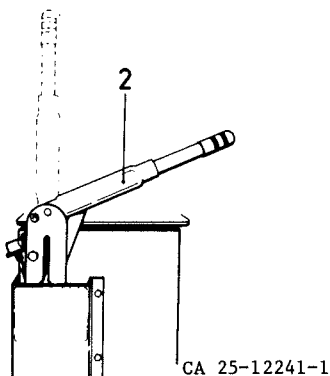


Fig. 18

Deutz F6L 912

## BRAKING

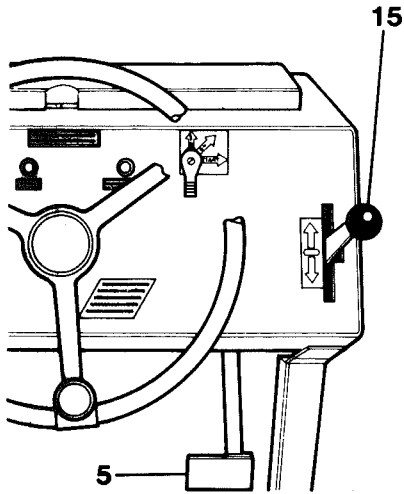


Fig. 19

### Normal braking while driving

Braking is normally carried out by means of the forward/reverse lever (15). The hydrostatic transmission acts on the rear wheels, slowing the roller when the lever is moved to NEUTRAL.

### Emergency braking

The roller is equipped with a foot brake (5) to bring it rapidly to a halt in emergency situations, the foot brake acts on the drum brakes on the wheels.

## STOPPING

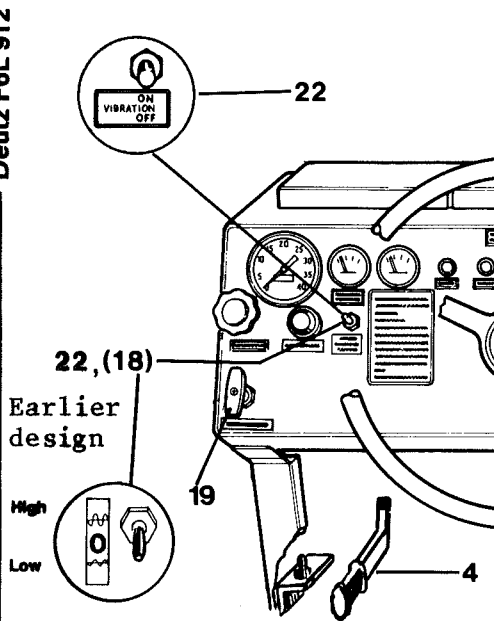


Fig. 20

- 1 Set the vibration switch (22) to OFF.

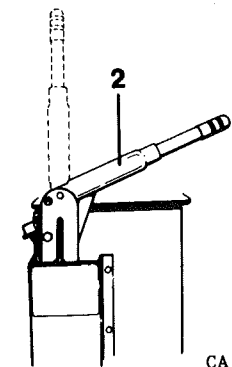
(On certain rollers, amplitude selection is carried out on the instrument panel. Set the control (18) to the 0 position.)

- 2 Move the forward/reverse lever (15), fig. 19, to the "NEUTRAL" position.

- 3 Apply the handbrake (2).

- 4 Allow the engine to run at idling speed for about 5 minutes to allow it to cool down.

- 5 To stop the engine, pull out the stop control (19), fig. 20.



CA 25-12241-1

Fig. 21

## PARKING

Never leave the roller with the diesel engine running.

When parking on an incline, use a stone or suchlike to chock the drum.

## VIBRATION

### Driving

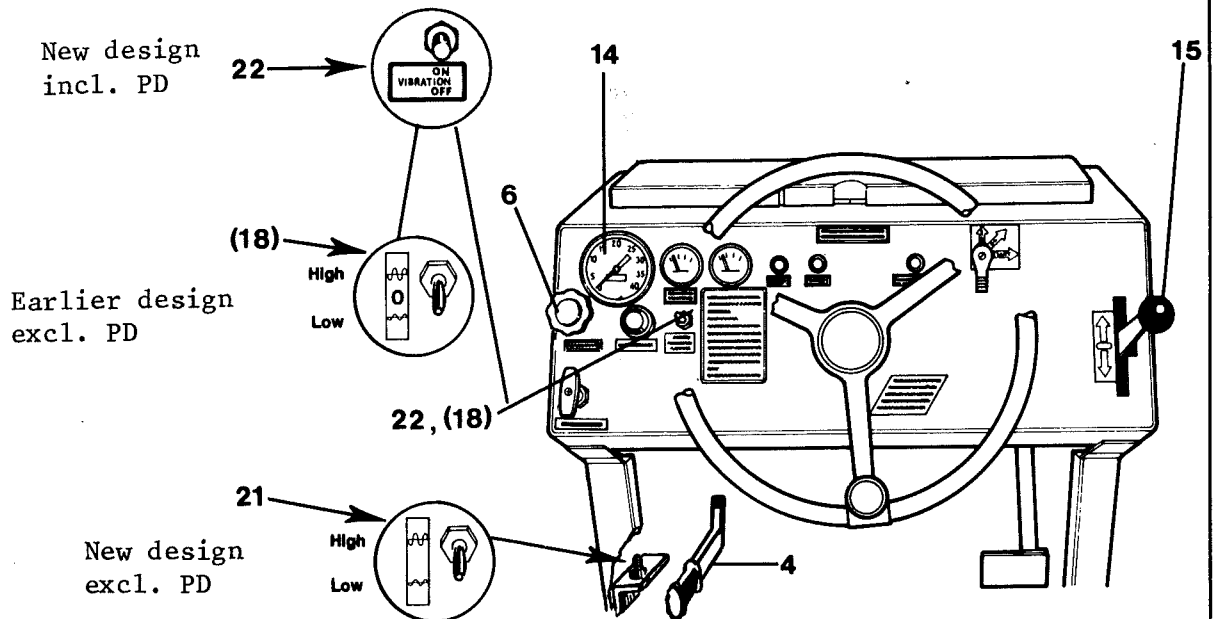
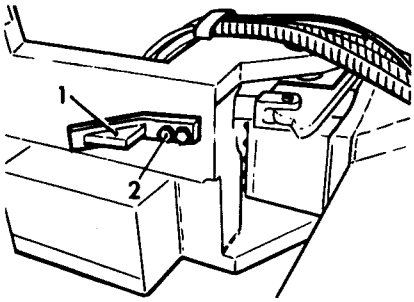


Fig. 22

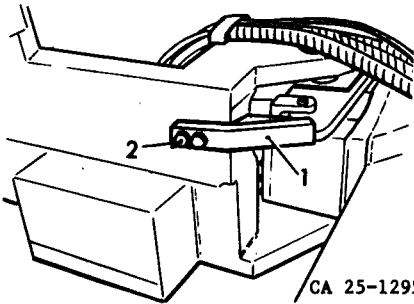
- 1 Ensure the vibration switch (22) is in the "OFF" position. Check the amplitude setting (21) at the same time. (On earlier machines, set the switch (18) to the 0 position.)  
*Never move the high/low amplitude switch when vibration is engaged. Wait a few seconds after disengaging vibration before altering the amplitude.*
- 2 Move the gear selector (4) to position 1. See the sticker on the instrument panel.
- 3 Adjust the throttle (6) until the tachometer (14) reads 2400 rpm. Fine adjustment is achieved by turning the upper part of the throttle (6).
- 4 Move the forward/reverse lever (15) to the desired direction of travel and use this lever to regulate the speed.
- 5 Use the vibration selector (22) to engage vibrations *when the roller is in motion*. (On earlier rollers, use switch (18) to engage vibrations.) If the engine speed falls, increase it to 2400 rpm (6).
- 6 Vibrations should not be disengaged when changing the direction of travel.

To change the direction of travel from forward to reverse (or vice versa), move the forward/reverse lever (15) slowly past the centre position. The hydrostatic transmission will ensure that the roller will be brought to a stop and change its direction of travel smoothly.

## LIFTING INSTRUCTIONS

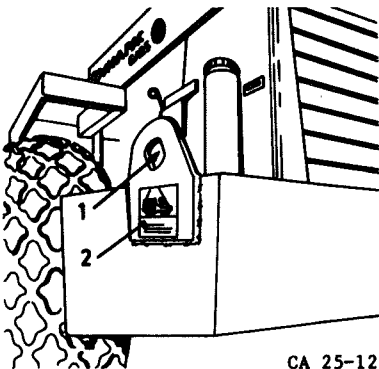


a) Position when driving



b) Position when lifting  
Fig. 23 Locking device

- 1 Locking device
- 2 Bolt



CA 25-12329-1

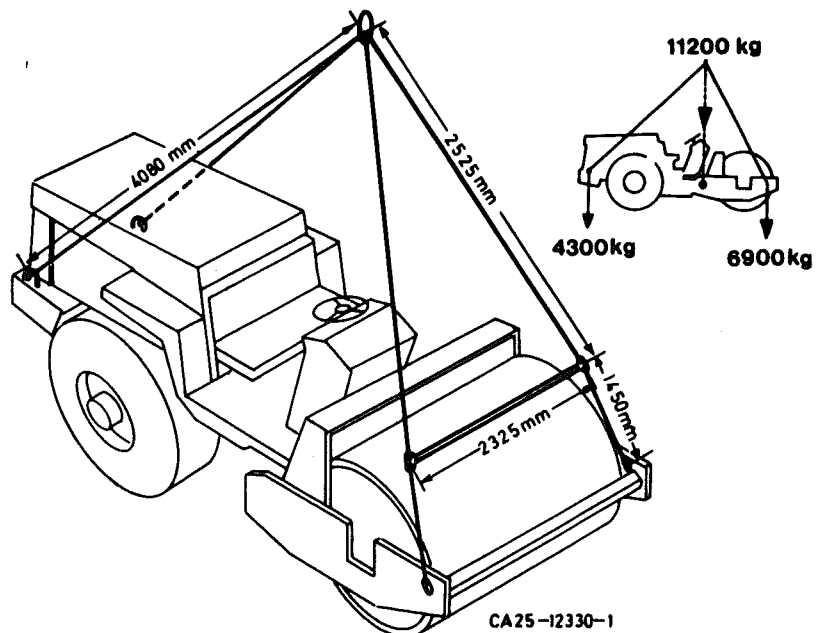
Fig. 24

The front and rear frames must be locked when lifting the roller, to prevent turning about the steering pivot.

- 1 Run the roller onto a flat surface with the front and rear frames in line.
- 2 Switch off the engine.
- 3 Remove the bolts (2) and fit the locking device (1) as shown in fig. 23b.  
*Fit a locking device on each side of the roller.*

Fit the lifting sling to the lifting slots (1) and lift the roller. The location of the lifting slots and the weight of the roller are marked on the plate (2) on the lefthand side of the roller.

Lifting sling is available as an optional extra (see the spare parts catalogue). If other lifting sling is used, see fig. 27, note that steel ropes, chains, etc. must comply to the current area safety regulations and be of the correct capacity for the weight to be lifted.



CA25-12330-1

Fig. 25

*Do not walk under a suspended roller!*