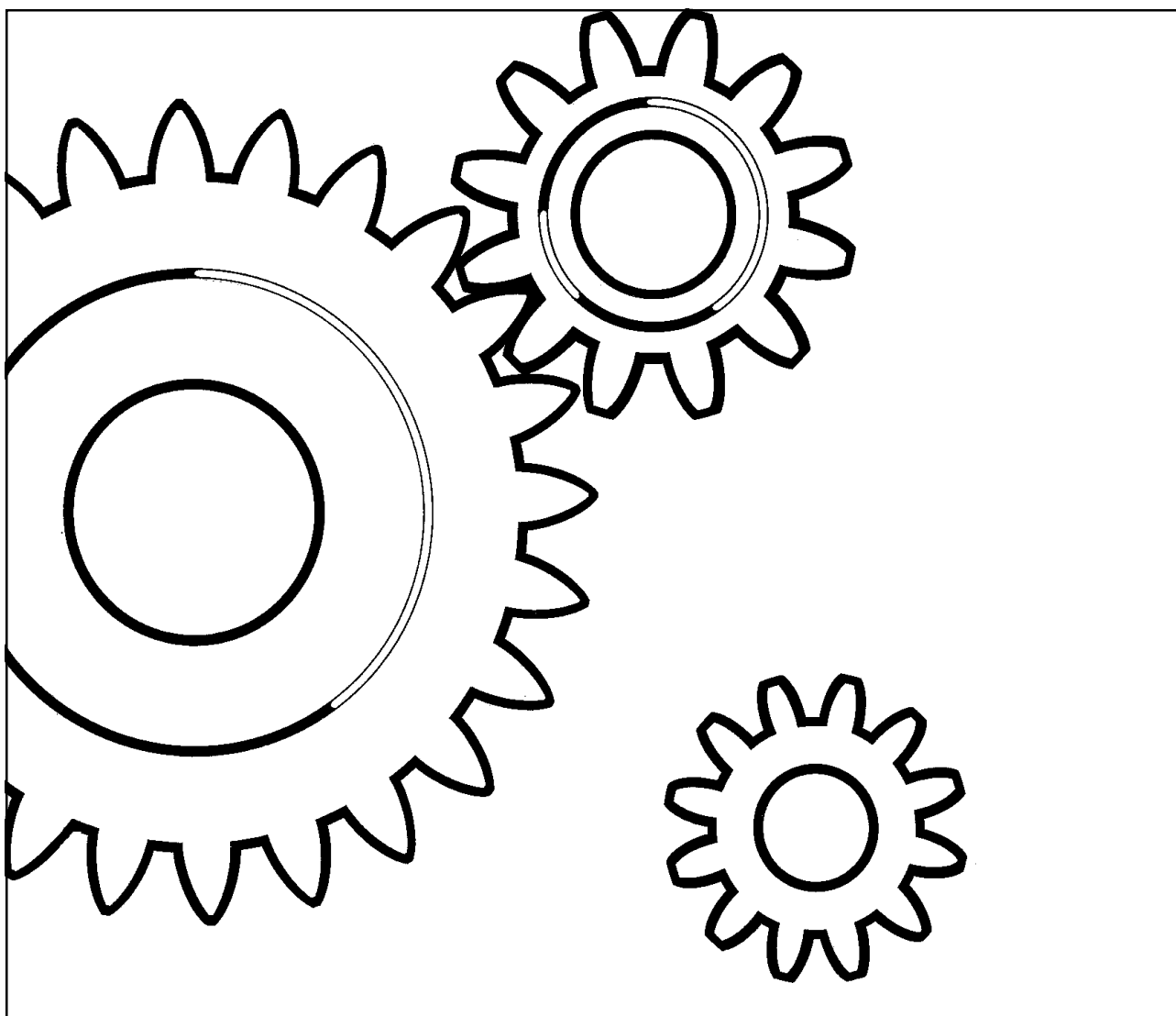


DYNAPAC
LP 6500
SPARE PARTS
CATALOGUE
SLP6500-2EN1



DYNAPAC

Part of the Atlas Copco Group

Atlas Copco Construction Tools AB

SE-105 23 Stockholm, Sweden

Vibratory Double Drum Roller LP 6500

Spare Parts Catalogue

SLP6500-2EN1

Valid from serial number:

**165042978*-*

Engines:

Hatz 1D50

Published catalogue issues valid for these walk behind roller :

Cat alogue Issue date

SLP6500-2EN1 2009 - 09



RESERVDLSBESTÄLLNING

Följande uppgifter ska lämnas vid beställning av reservdelar för att undvika leveransfel:

1. Maskintyp.
2. Vältens serienummer.
3. Antal av önskad reservdel.
4. Reserdelens artikelnummer.
5. Reservdelens benämning.
6. Måttuppgifter vid beställning av metervara.

ERSATZTEILBESTELLUNG

Zur Vermeidung von Fehllieferungen sind bei der Bestellung von Ersatzteilen folgende Angaben zu machen:

1. Maschinentyp.
2. Herstellungsnummer.
3. Bestellmenge. (Quantity)
4. Ersatzteilnummer. (Part N^o)
5. Ersatzteilbenennung. (Denomination)
6. Massangaben bei Bestellung von Meterware.

PEDIDO DE RECAMBIOS

Para evitar errores en las entregas, deberán indicarse los siguientes datos al hacer un pedido de recambios:

1. Tipo de máquina.
2. Número de serie.
3. Cantidad de piezas deseadas. (Quantity)
4. Número de artículo de la pieza de recambio. (Part N^o)
5. Denominación de la pieza. (Denomination)
6. Indíquese la medida al solicitar un artículo que se expide por metros.

ORDERING SPARE PARTS

To avoid errors in delivery, please give the following information when ordering spare parts:

1. Type of machine.
2. Roller serial number.
3. Quantity required.
4. Part number.
5. Parts denomination.
6. Dimensions when ordering per length.

ORDINI DI RICAMBI

Per evitare errori nelle consegne di ricambi, Vi preghiamo di comunicarci le seguenti informazioni al momento dell'ordinazione:

1. Tipo di macchina.
2. Numero di serie della macchina.
3. Quantità dei pezzi desiderati. (Quantity)
4. Numero di codice del pezzo. (Part N^o)
5. Descrizione del pezzo di ricambio. (Denomination)
6. Misura, in caso di ordine per metro.

COMMANDE DE PIÈCES DE RECHANGE

Les indications suivantes doivent être fournies lors de la commande de pièces de rechange, afin d'éviter toute erreur de livraison:

1. Type de machine.
2. Numéro de série.
3. Quantité désirée de pièce de rechange. (Quantity)
4. Numéro de la pièce de rechange. (Part N^o)
5. Dénomination de la pièce de rechange. (Denomination)
6. Longueur en cas de commande au mètre.

YOUR AGENT/DEALER:

DYNAPAC

Text pages

The text pages is structured as the picture on the right.

1. This is the remarks for specific items and the descriptions of the remarks is at the bottom of the parts list.

2. Parts indicated by a dot and moved to the right are included when buying the assembled unit above.

3. Spare parts and service code for a specific part, mainly for internal use at Dynapac. "A" = Service part, "B" = Fast moving part, "C" = Suggested exchanged part and "D" = Regular spare part.

DYNAPAC					
Cooling system					
Ref. No.	Part No.	Rem.	Qty	Description	Code
1	223047		1	Water cooler	③ C
2	935852		1	Radiator cap	D
3	935851	①	1	Cock	
4	373263	A	1	Radiator hose	D
5	313009		6	Clamp	
6	205058	B	1XL	Rubber clotch	
7	373261	C	1	Radiator hose	D
8			1	Oil cooler	D
9	223289		1	Plate	
10	902166	D	1XL	Edge trim	
11	223287	E	1	Holder	
12	223288	F	1	Holder	
13	908168		1	Fan guard	
14	908170		1	Fan shroud	
15	908171		2	Mounting bar	
16	908169		1	Fan guard	
17	500021		14	Screw	
18	902286		14	Nut	
19	600006		14	Washer	
20	313102		2	Cable strap	

A) Upper
 B) L=060MM
 C) Lower
 D) L=2280MM
 E) Left
 F) Right

Changes

PARTS INFO	SERVICE INFO	GROUP	PAGE	NOTES

Notes

PÄRMETIKETT

För att undvika fel vid reservdelsbeställning finns här nedan två etiketter som passar i fickorna på pärmarnas ryggar. På dessa kan man se från vilket vältnummer av aktuell maskin reservdelskatalogen gäller. Gör så här:

1. Tag denna sida ur pärmen.
2. Klipp ut etiketten till **VÄNSTER** (1) och sätt in den i fickan på **DENNA** pärmens rygg.
3. Finns det en etikett till **HÖGER** (2), kan denna användas på pärmen för **FÖREGÅENDE** utgåva av denna katalog.
4. Kasta detta papper.

KATALOG-BESCHRIFTUNG

Zur Vermeidung von Fehlern bei der Ersatzteilbestellung benutzen Sie bitte die unteren Beschriftungen, um die Kataloge auf der Rückseite zu kennzeichnen. Auf der Beschriftung ist angegeben, für welche Maschinennummern der jeweilige Katalog gültig ist. Ablauf:

1. Nehmen Sie dieses Blatt aus dem Katalog.
2. Schneiden Sie die **LINKE** Beschriftung (1) aus. Schieben Sie die Beschriftung in die tasche auf **DEM** Katalogrücke.
3. Sollte die Beschriftung unten **RECHTS** (2) mitgeliefert werden, kennzeichnen Sie damit bitte die **ÄLTERE** Ausführung dieses Kataloges.
4. Den Rest dieses Blattes bitte vernichten.

ETIQUETA PARA LA CARPETA

Para evitar errores al pedir repuestos utilicen las etiquetas abajo descritas para identificar los catálogos en la parte trasera de la carpeta. En la etiqueta se ven los números de referencia de la serie para la cual es válido el catálogo. Instrucciones:

1. Quitar esta página de la carpeta.
2. Corta la etiqueta **IZQUIERDA** (1) y ponerla en **ESTA** carpeta en la parte trasera.
3. Si hay una etiqueta en la parte **DERECHA** (2) se puede utilizar en la carpeta para el catálogo que **PRECEDE** a esta.
4. Tirar esta hoja.

BINDER LABEL

To avoid errors when ordering spare parts use the labels below to identify the catalogues on the back of the binder. The label contain the serial number range for which the catalogue is valid. Do like this:

1. Remove this page from the binder.
2. Cut out the **LEFT** label (1) and put it on **THIS** binders back.
3. If there is a label to the **RIGHT** (2), it can be used on the binder for **PRECEDING** issue of this catalogue.
4. Throw away this paper.

ETICHETTAPOSTASULRACCOGLITORE

Per evitare errori quando ordinate pezzi di ricambio, usate le etichette in calce che servono ad identificare i cataloghi sul retro del raccoglitore. L'etichetta indica il numero di matricola delle macchine prese in considerazione nel catalogo.

1. Rimuovete questa pagina dal raccoglitore.
2. Ritagliate l'etichetta posta a **SINISTRA** (1) e ponetela sul retro **DEL** raccoglitore.
3. Se trovate anche un'etichetta sulla **DESTRA** (2), ritagliatela e ponetela sul raccoglitore relativo alla **PRECEDENTE** edizione del catalogo.
4. Distruggete questo foglio.

ETIQUETAGE DU CATALOGUE

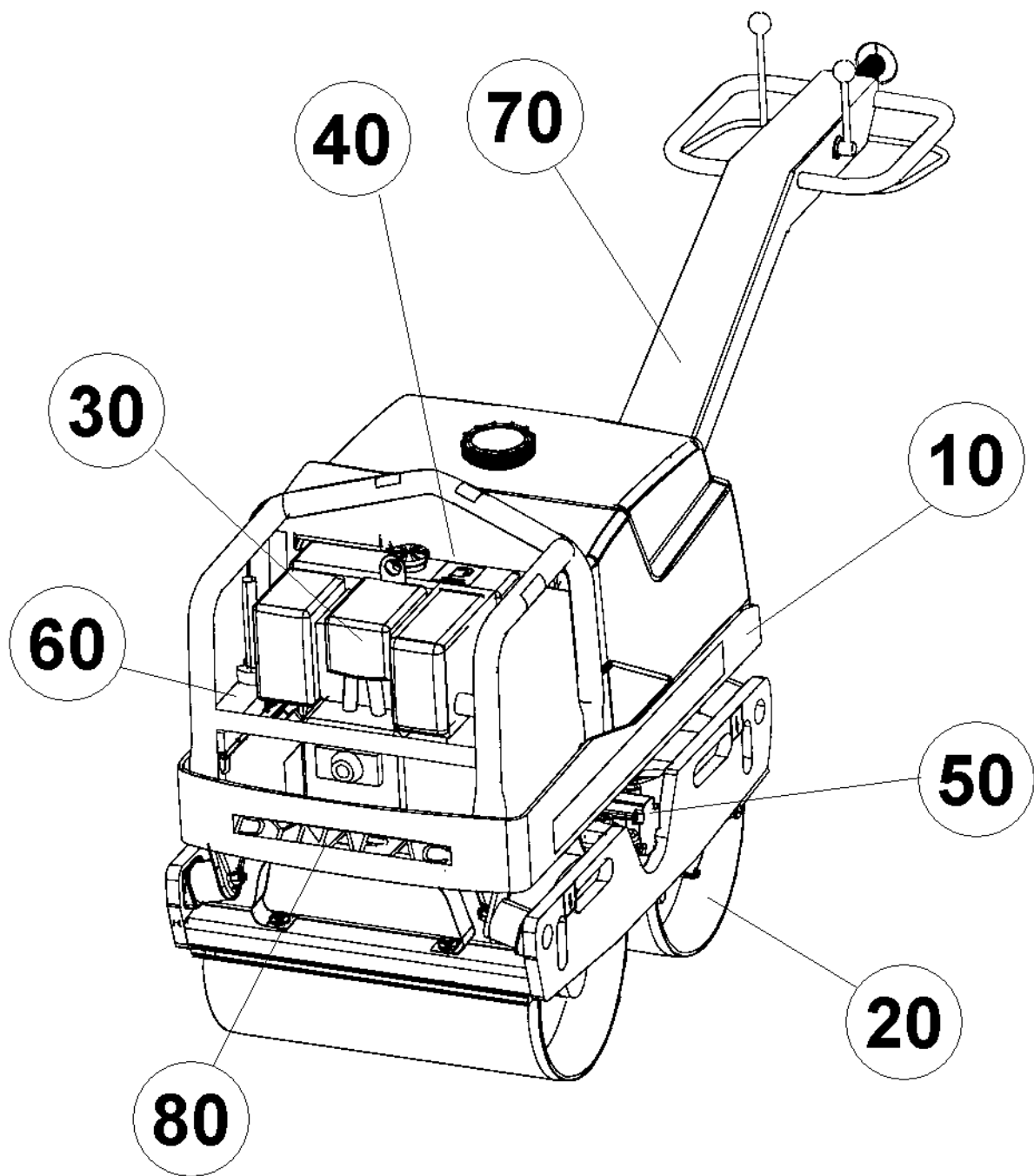
Afin d'éviter des erreurs lors de commandes de pièces de rechange, nous vous conseillons d'apposer les marquages ci-dessous à l'arrière du classeur, pour identifier les catalogues. Ce marquage indique les numéros de série pour lesquels le catalogue est adapté. Il convient de procéder de la façon suivante:

1. Retirez cette page du classeur.
2. Découpez l'étiquette de **GAUCHE** (1), et apposez-la à l'arrière de **CE** catalogue.
3. Si il y a une étiquette à **DROITE** (2), vous pourrez l'apposer sur le classeur de l'édition **PRECEDENTE** du catalogue.
4. Détruire cette feuille.

1.



LP6500 From SN: *16504298*-	2
Frame and engine plate	4
Frame and engine plate	6
Lower frame	8
Scraper	10
Sprinkler system	12
Drums and eccentric element	14
Drum	16
Eccentric element	18
Engine and engine installation	20
Engine Hatz 1D50	22
Engine installation, crank handle started	24
Engine installation, electric started	26
Power transmission	28
Centrifugal clutch	30
Hydraulic system	32
Wheel motor and propulsion pump	34
Vibration motor and hydraulic pump	36
Drum motor	38
Hydraulic pump Propulsion	40
Electrical equipment	42
Electrical equipment	44
Handle and controls	46
Handle with vertical safety bow	48
Throttle control, old version	50
Throttle control, new version	52
Parking brake	54
Decals and documentation	56
Decals and documentation	58



LP6500 From SN: *16504298*-

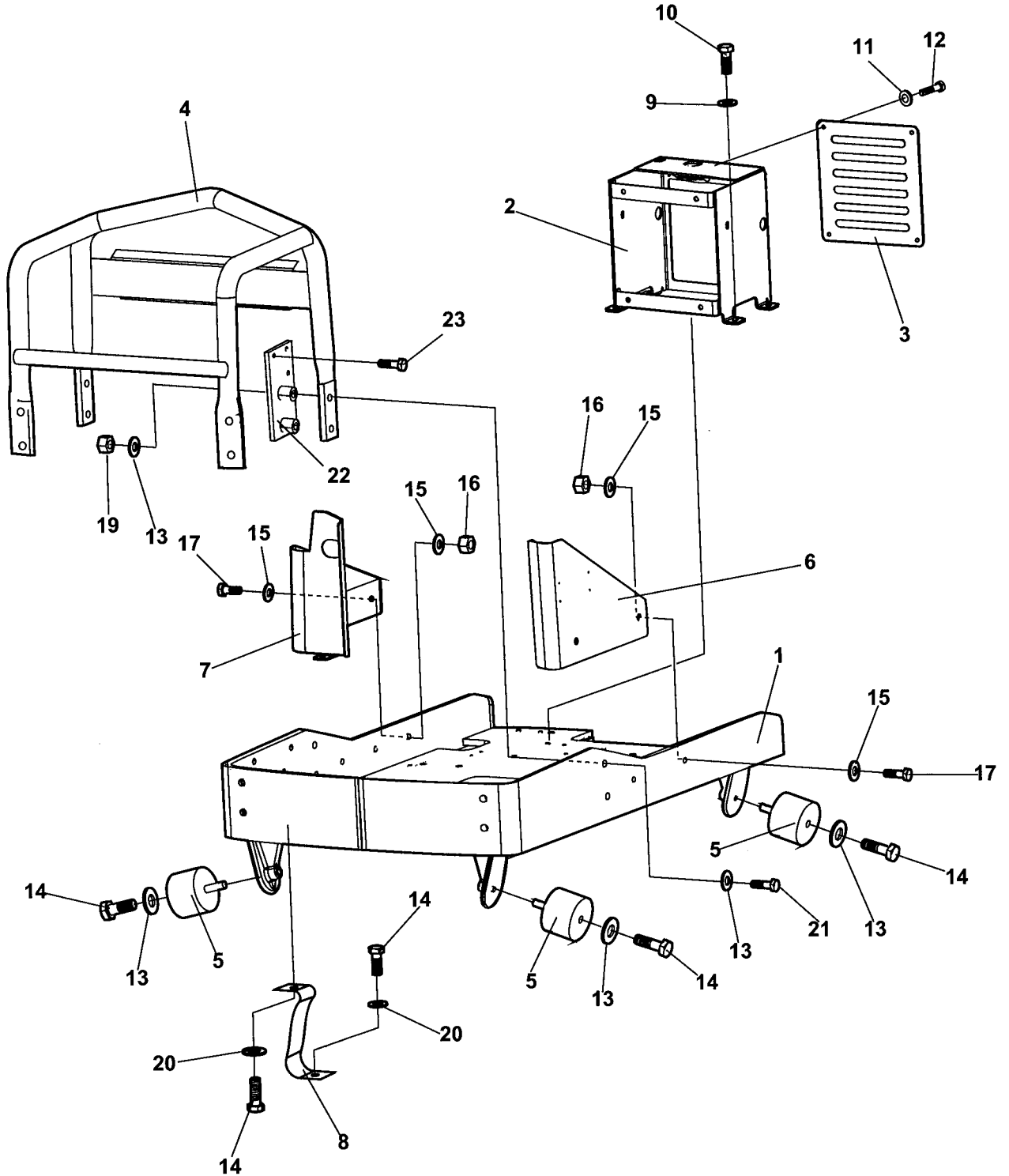
Item	Part No	Rem Qty	Description	Code
10			Frame and engine plate (Page 4)	
20			Drums and eccentric element (Page 14)	
30			Engine and engine installation (Page 20)	
40			Power transmission (Page 28)	
50			Hydraulic system (Page 32)	
60			Electrical equipment (Page 42)	
70			Handle and controls (Page 46)	
80		1	Decals and documentation (Page 56)	

Frame and engine plate

Item	Part No	Rem Qty	Description	Code
10			Frame and engine plate (Page 6)	
20			Lower frame (Page 8)	
30			Scraper (Page 10)	
40			Sprinkler system (Page 12)	

Frame and engine plate

19031

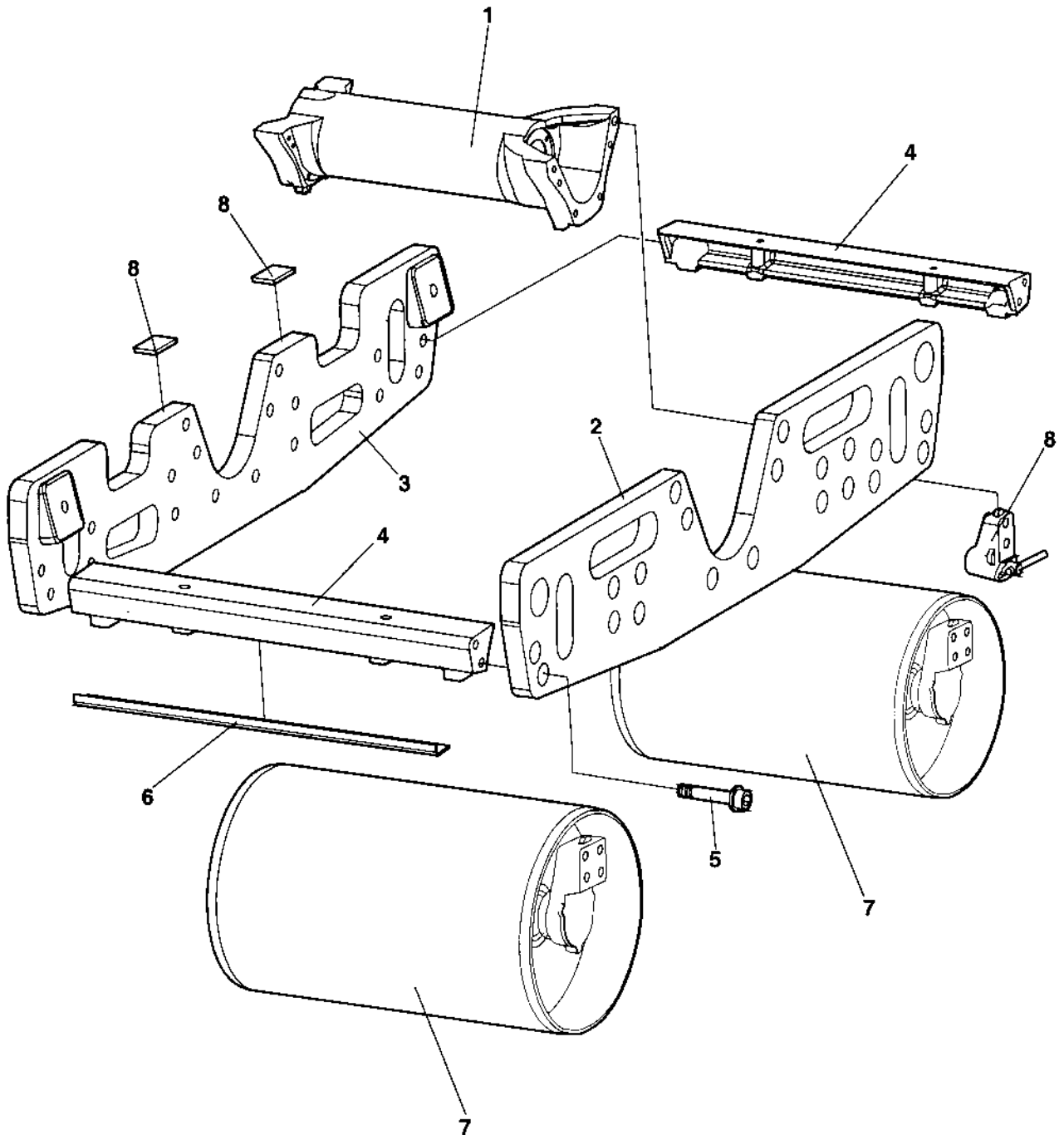


Frame and engine plate

Item	Part No	Rem Qty	Description	Code
1	D384764-01	1	Engine base	
2	4700389654	1	Bracket	
3	4700386242	1	Cover	
4	D386257-03	1	Protective frame	
5	4700928941	4	Shock absorber	B
6	4700397265	1	Cover	
7	4700382454	1	Cover plate	
8	4700283075	4	Strap	
9	4700904230	4	Steel plain washer	
10	4700500043	4	Screw	M10x16H 8,8
11	4700904655	4	Washer	
12	4700904206	4	Screw	
13	4700904231	20	Washer	13x24x2 300 HV
14	4700500035	12	Screw	M12x020H
15	4700904229	10	Steel plain washer	
16	4700570005	4	Nut	M8
17	4700500053	6	Screw	M8x20H 8.8
18	4700500056	6	Screw	
19	4700586019	8	Lock nut	
20	4700924543	8	Washer	
21	4700500196	2	Screw	M12-1,75x80 8.8
22	4700397344	1	Bracket	
23	4700500501	3	Screw	M6x20

Lower frame

17594

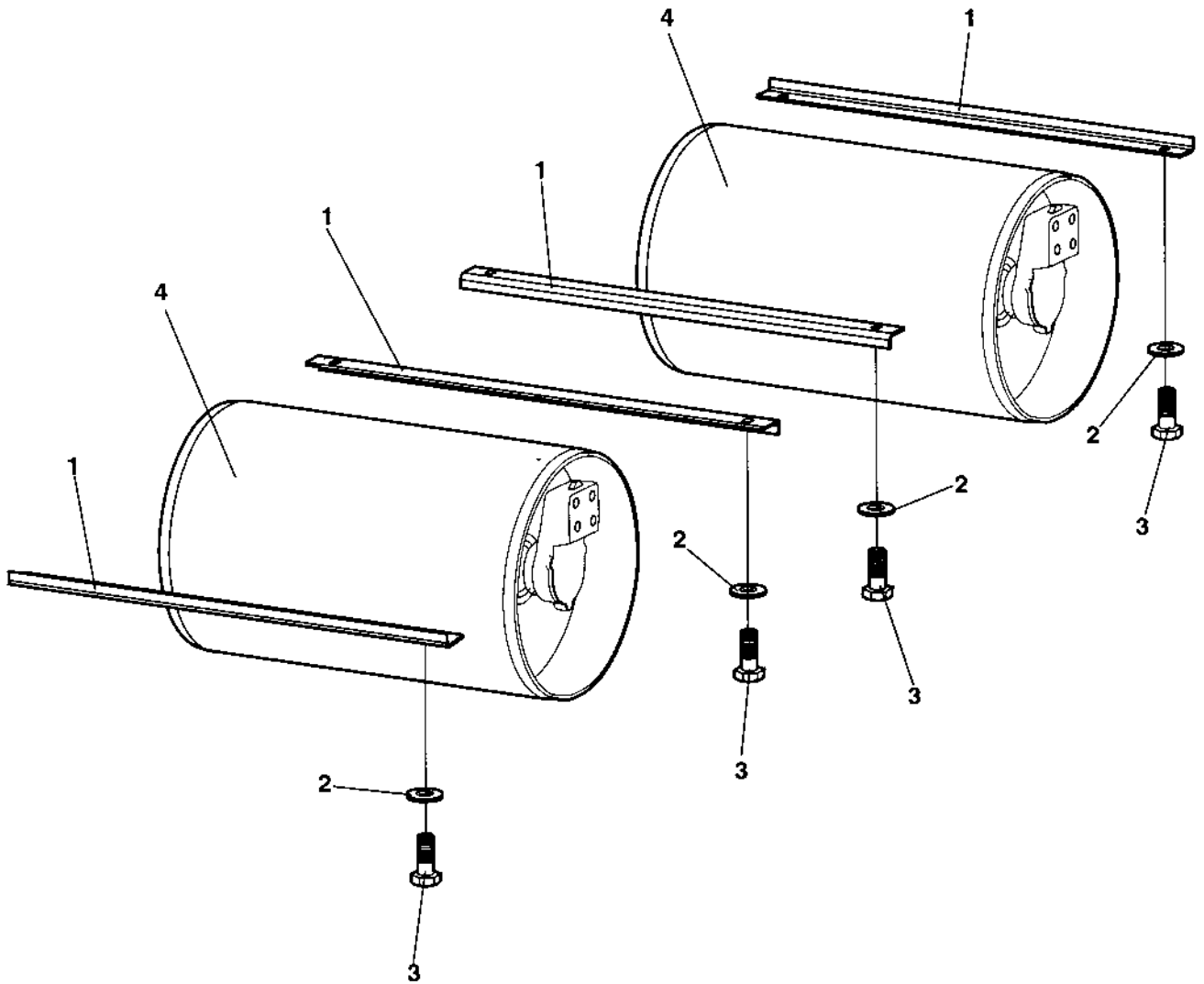


Lower frame

Item	Part No	Rem Qty	Description	Code
1		1	Eccentric element (Page 18)	
2	D387482-02	1	Side plate	
3	D387481-02	1	Side plate	
4	D387472-02	2	Beam	
5	4700791360	8	Screw	
6		4	Scraper (Page 10)	
7		2	Drum (Page 16)	
8	4700386496	2	Rubber cloth	
9		1	Parking brake (Page 54)	

Scraper

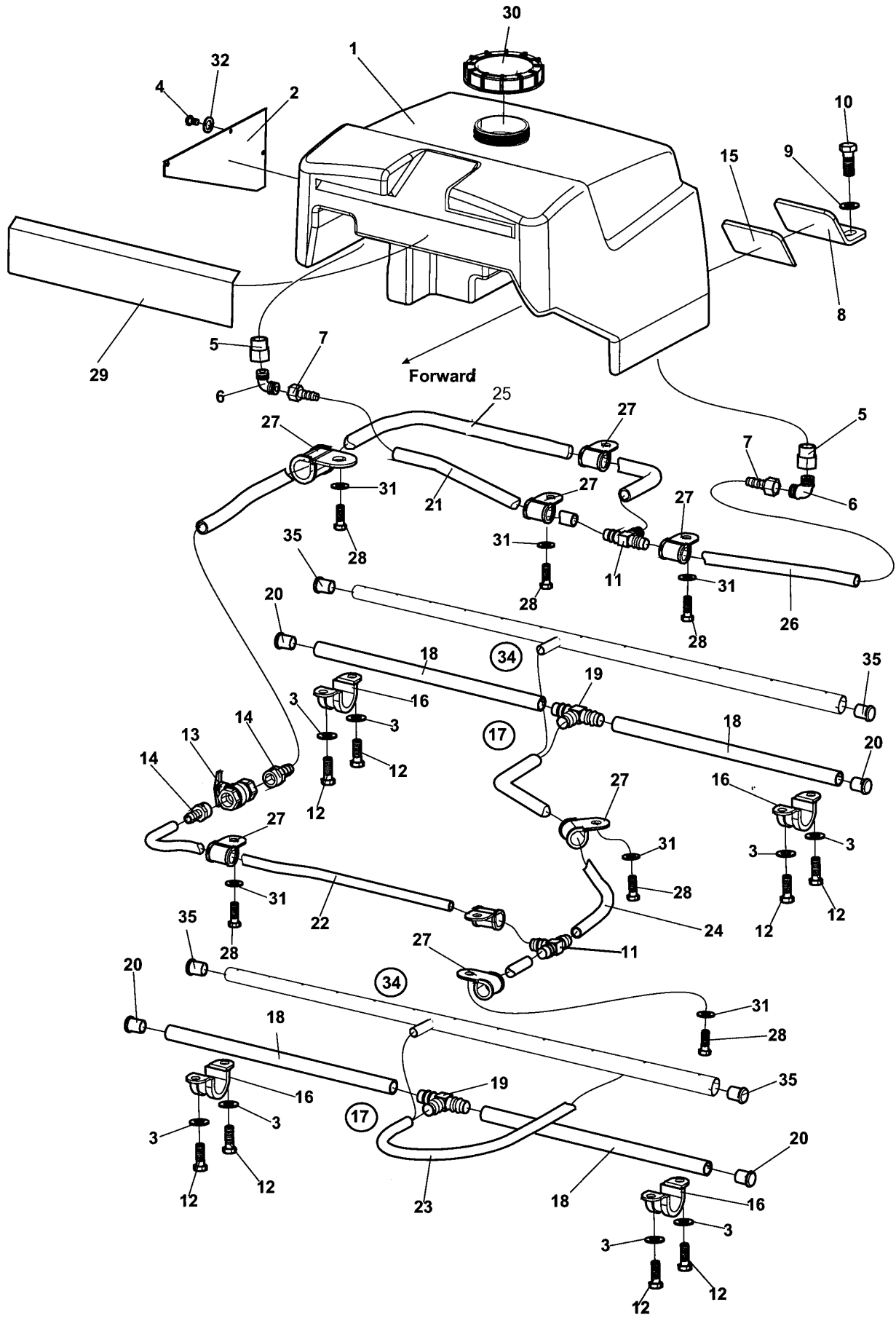
17595



Scraper

Item	Part No	Rem	Qty	Description	Code
1	4700385642		4	Scraper	
2	4700904567		8	Washer	10,5x28x6 HB305
3	4700500028		8	Screw	
4		A	2	Drum	

A) See section drum



Sprinkler system

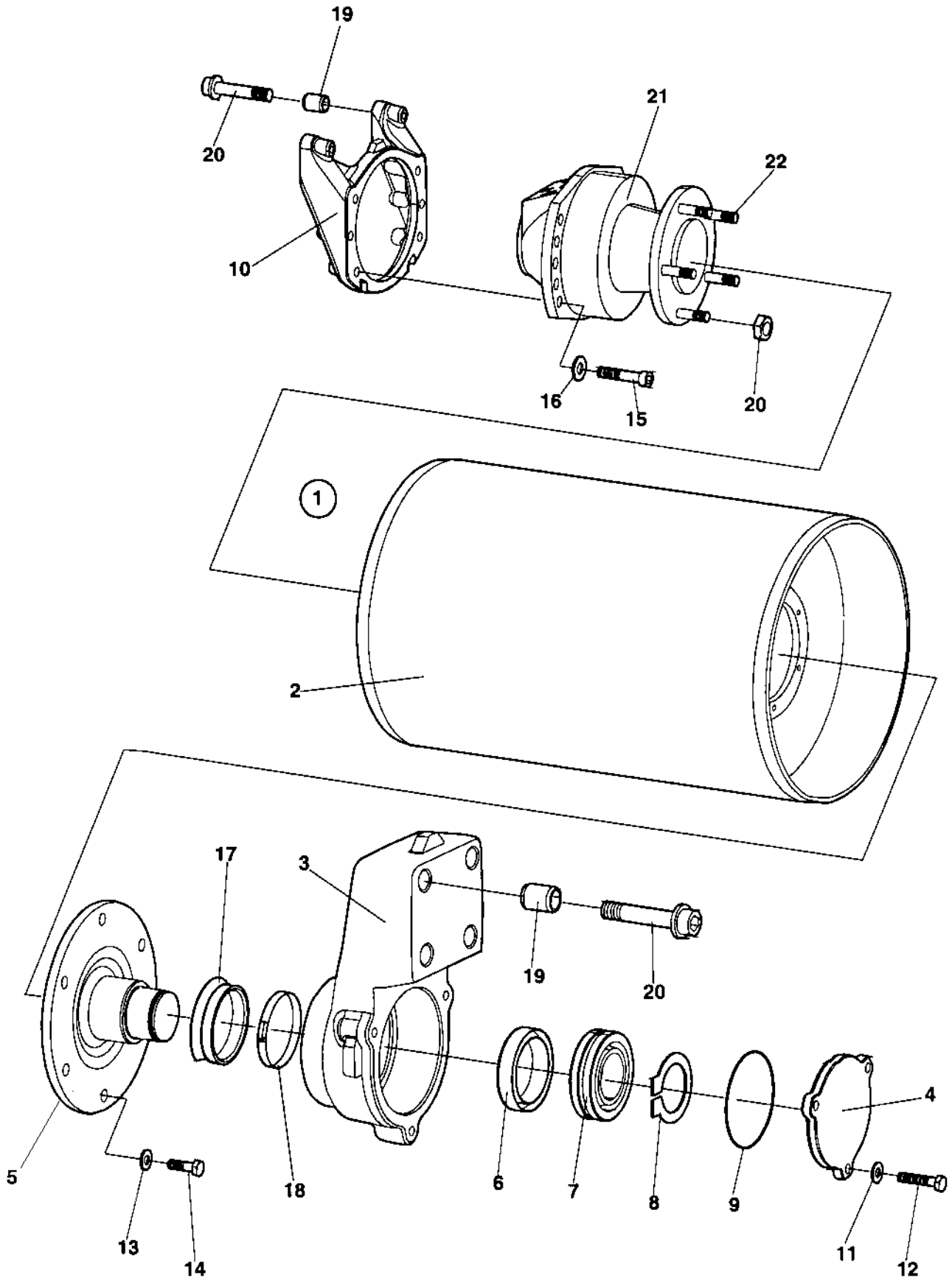
Item	Part No	Rem	Qty	Description	Code
1	4700382447		1	Water tank	
2	4700387258		1	Cover	
3	4700904228		8	Washer	6,4x12x1,5
4	4700902224		3	Screw	M6x10
5	4700791367		2	Connector	
6	4700791368		2	Connector	
7	4700791369		2	Hose connector	
8	4700388441		2	Bracket	
9	4700904230		4	Steel plain washer	
10	4700500027		4	Screw	M10-1,55x22 8.8
11	4700791362		2	Hose connector	
12	4700500013		8	Screw	M6-1x16 8,8
13	4700791370		1	Ball valve	
14	4700791650		2	Hose connection	
15	4700386102	A	2	Rubber cloth	
16	4700791315		4	Pipe clamp	
17	4700384492	B	2	Sprinkler pipe, cpl	
18			2	.Sprinkler pipe	
19			1	.Hose connection	
20	4700791361		2	.Plug	
21	4700244008		1	Hose	
22	4700244008		1	Hose	
23	4700244008		1	Hose	
24	4700244008		1	Hose	
25	4700244008		1	Hose	
26	4700244008		1	Hose	
27	4700921072		8	Clamp	
28	4700500019		8	Hexagon head screw	
29	4700385884		1	Rubber cloth	
30	4700920819		1	Filler cap	D
31	4700904229		8	Steel plain washer	
32	4700904655		3	Washer	
34	4700396829		2	Sprinkler pipe, cpl	
35	4700791429		2	.Plug	
			1		

- A) Old version, not in use anymore
- B) Old version, replaced by item 34

Drums and eccentric element

Item	Part No	Rem Qty	Description	Code
10			Drum (Page 16)	
20			Eccentric element (Page 18)	

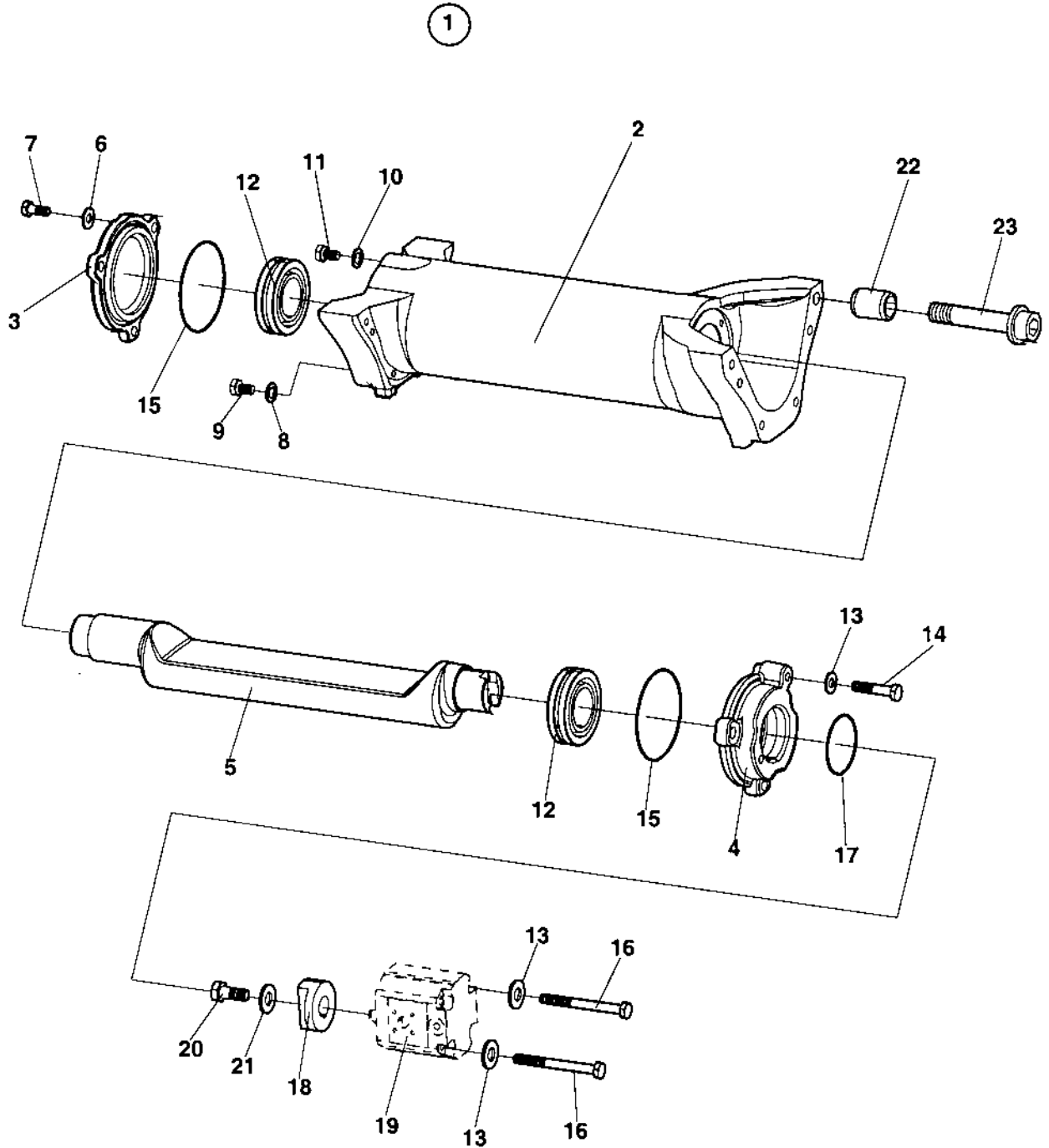
Drum
17593



Drum

Item	Part No	Rem	Qty	Description	Code
1			1	Drum, cpl	
2	D382302-03		1	Drum	
3	4700382504		1	Bearing bracket	
4	4700382304		1	Bearing cover	
5	4700384470		1	Drum shaft	
6	4700791246		1	Oil seal	D
7	4700791240		1	Bearing	D
8	4700150017		1	Retaining ring	D
9	4700160032		1	O-ring	D
10	4700384423		1	Drum bracket	
11	4700904229		3	Steel plain washer	
12	4700500053		3	Screw	M8x20H 8.8
13	4700904230		6	Steel plain washer	
14	4700500028		6	Screw	
15	4700903563		6	Screw	M12-1,75x55 12,9
16	4700904231		6	Washer	13x24x2 300 HV
17	4700386604		1	Protective cover	
18	4700313033		1	Hose clamp	D
19	4700384902	D	4	Sleeve	
20	4700791360		8	Screw	
21		A	1	Hydraulic motor	
22		B,C	6	Screw	
23		B	6	Nut	

- A) See section hydraulic system
- B) Delivered with hydraulic motor
- C) See section hydraulic motor
- D) Mounted in lower frame



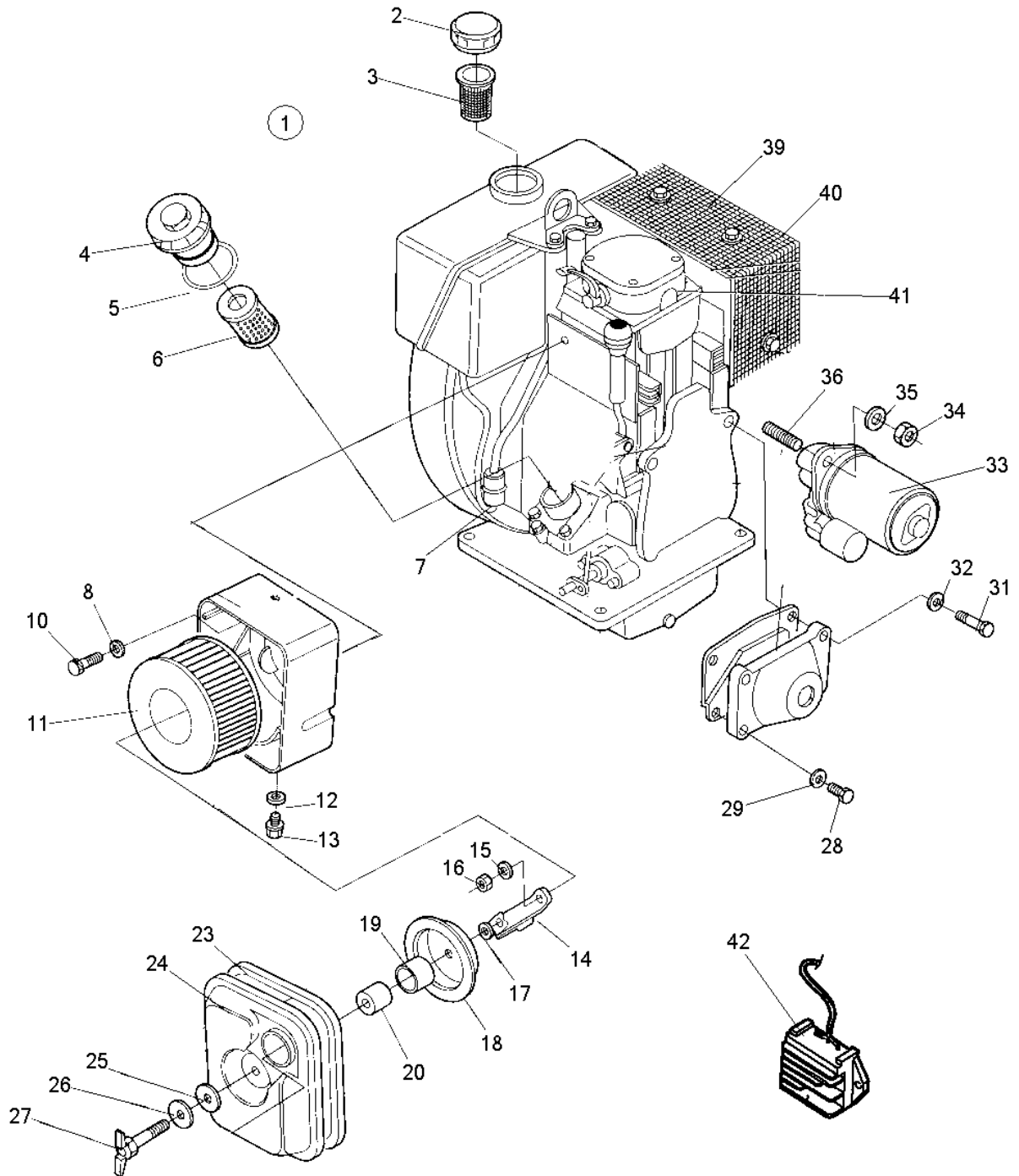
Eccentric element

Item	Part No	Rem Qty	Description	Code
1		1	Eccentric element, cpl	
2	4700382296	1	.Eccentric housing	
3	4700382304	1	.Bearing cover	
4	4700382520	1	.Bearing cover	
5	4700382329	1	.Eccentric shaft	
6	4700904229	3	.Steel plain washer	
7	4700500053	3	.Screw	M8x20H 8.8
8	4700162010	1	.Seal ring	D
9	4700232246	1	.Plug	
10	4700162011	1	.Washer, sealing	D
11	4700232143	1	.Plug	
12	4700791240	2	.Bearing	D
13	4700904230	5	.Steel plain washer	
14	4700500029	3	.Hexagon head screw	
15	4700160032	2	.O-ring	D
16	4700500034	2	.Screw	M10-1,5x100 8,8
17	4700160328	1	.O-ring	D
18	4700382521	1	.Coupling	
19		A 1	.Hydraulic motor	
20		B 1	.Screw	
21		B 1	.Washer	
22	4700384902	4	Sleeve	
23	4700791360	12	Screw	

- A) See section hydraulic system
- B) Supplied with hydraulic motor

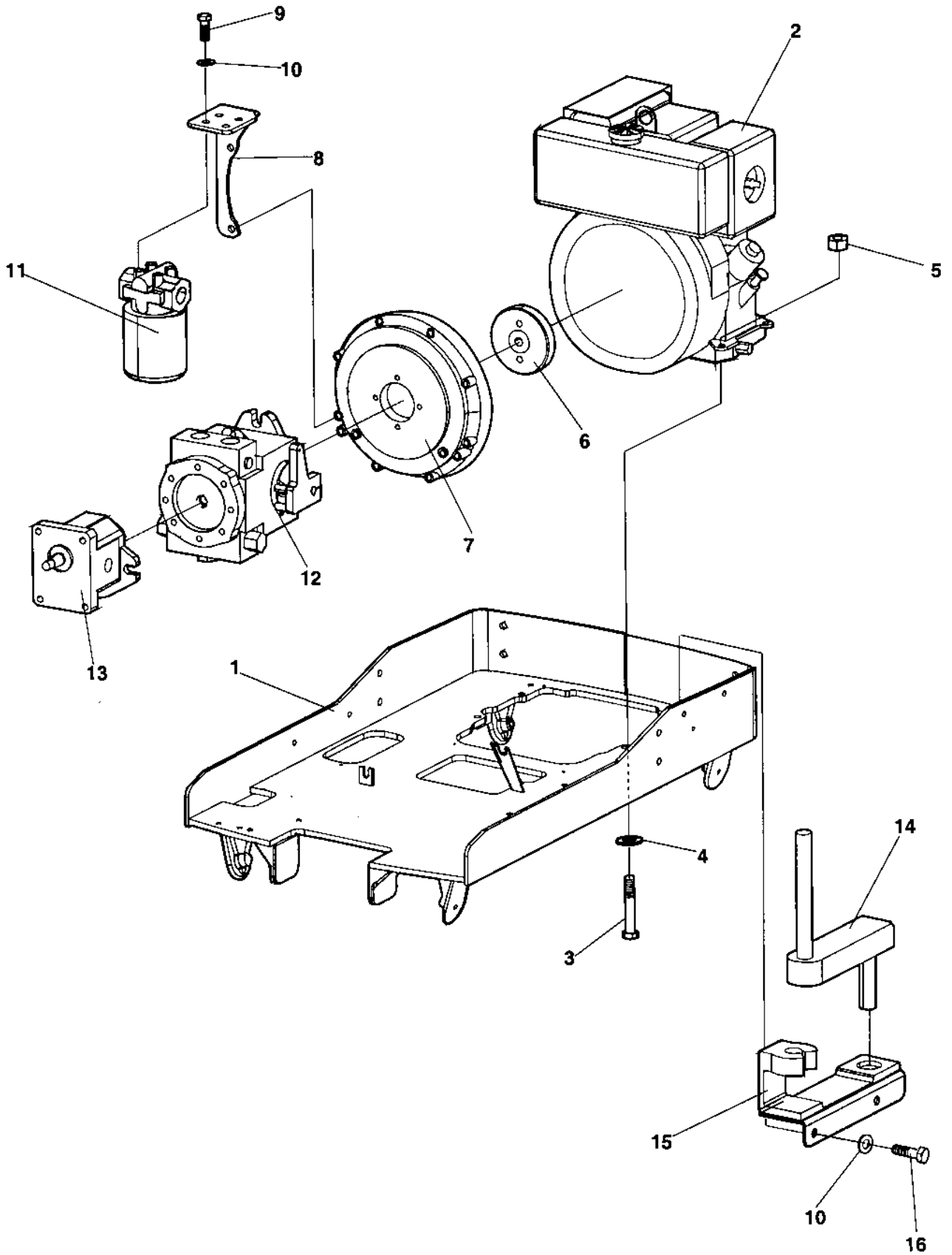
Engine and engine installation

Item	Part No	Rem Qty	Description	Code
10			Engine (Page 22)	Hatz 1D50
20			Engine installation, crank handle started (Page 24)	
30			Engine installation, electric started (Page 26)	
		1		



Item	Part No	Rem Qty	Description	Code
1	4700397215	1	Engine, cpl	Hatz 1D50, Electrical started
	4700379097	1	Engine, cpl	Hatz 1D50, Manual started
2	4700935224	1	.Fuel tank cap	
3	4700239327	1	.Fuel strainer	D
4	4700935608	1	.Oil filter cover, cpl	
5	4700239335	1	..O-ring	B
6	4700239326	1	.Oil filter	A
7	4700937430	1	.Fuel filter	
8	4700936910	1	.Washer	
10	4700239558	1	.Screw	
11	4700239328	1	.Air filter element	A
12	4700936907	1	.Washer	
13	4700239564	1	.Screw	
14	4700239559	1	.Bracket	
15	4700239520	2	.Washer	
16	4700239521	2	.Nut	
17	4700239522	1	.Washer	
18	4700239560	1	.Cover	
19	4700239524	1	.Bushing	
20	4700239525	1	.Gasket	
23	4700239561	1	.Gasket	
24	4700939154	1	.Air filter cover	
25	4700239530	1	.Washer	
26	4700239529	1	.Washer	
27	4700239531	1	.Screw	
28	4700939155	2	.Screw	
29	4700239520	2	.Washer	
30	4700935753	1	.Gasket	
31	4700938595	2	.Screw	
32	4700239520	2	Washer	
33	4700939153	1	.Starter	
34	4700935612	2	.Nut	
35	4700935611	2	.Washer	
36	4700938594	2	.Stud	
37	4700508001	4	.Screw	M6x12
38	4700239886	4	.Washer	
39	4700939150	1	.Muffler	
40	4700939157	1	.Cover	
41	4700239333	1	.Valve cover gasket	D
42	4700945605	1	.Charging regulator	

Engine installation, crank handle started
17607



Engine installation, crank handle started

Item	Part No	Rem	Qty	Description	Code
1			1	Engine plate	
2			1	Engine (Page 22)	Hatz 1D50
3	4700500037		4	Screw	
4	4700904231		4	Washer	13x24x2 300 HV
5	4700791374		4	Nut	
6			1	Centrifugal clutch (Page 30)	
7	4700239923		1	Adapter	
8	4700385518		1	Bracket	
9	4700500027		4	Screw	M10-1,55x22 8.8
10	4700904230		6	Steel plain washer	
11		B	1	Hydraulic oil filter	
12		C	1	Hydraulic pump (Page 40)	Propulsion
13		B	1	Hydraulic pump	
14		D	1	Crank handle	
15	4700386320		1	Crank holder	
16	4700500029		2	Hexagon head screw	

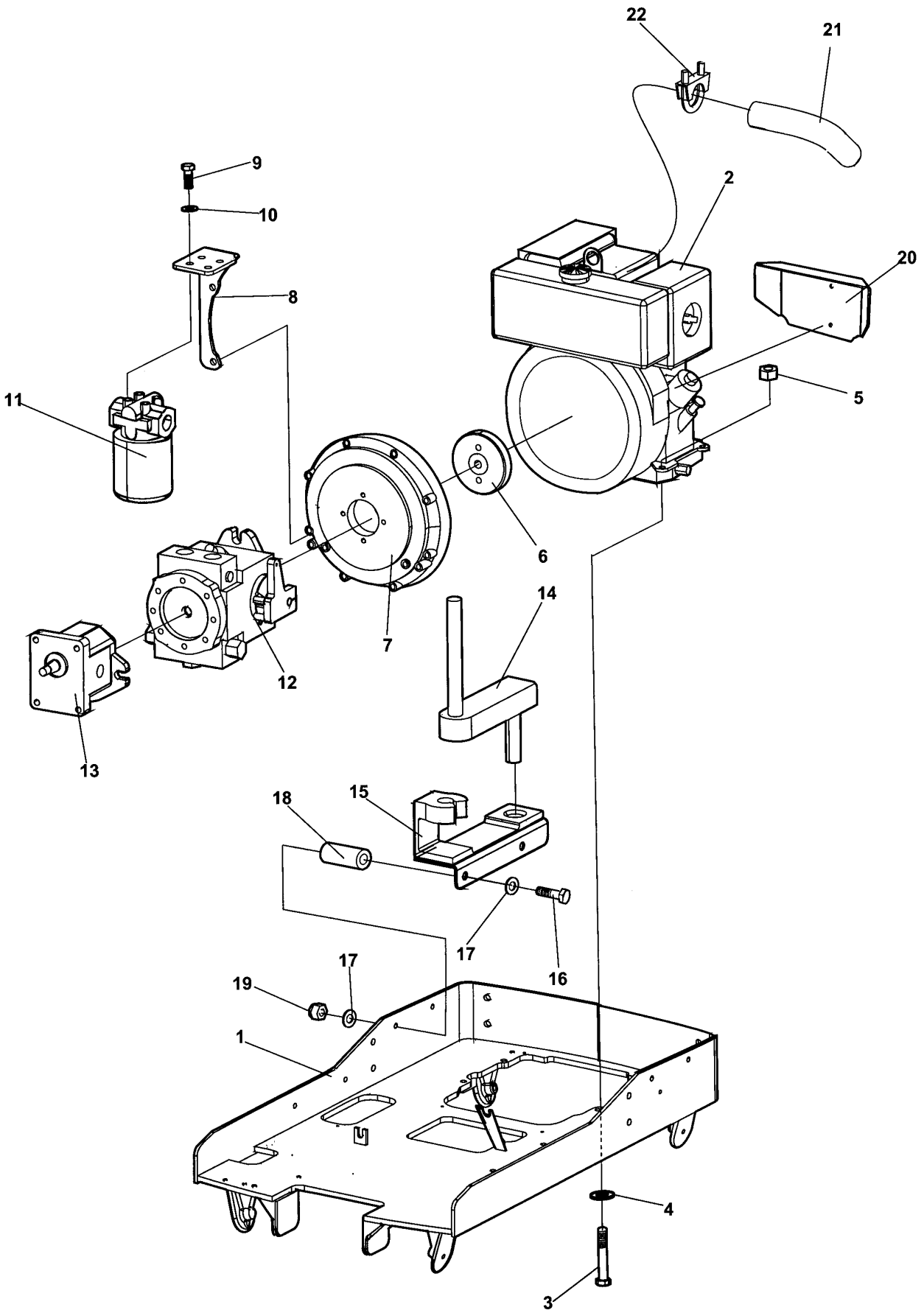
B) See section hydraulic system

C) See section hydraulic pump

D) See section engine

Engine installation, electric started

19029



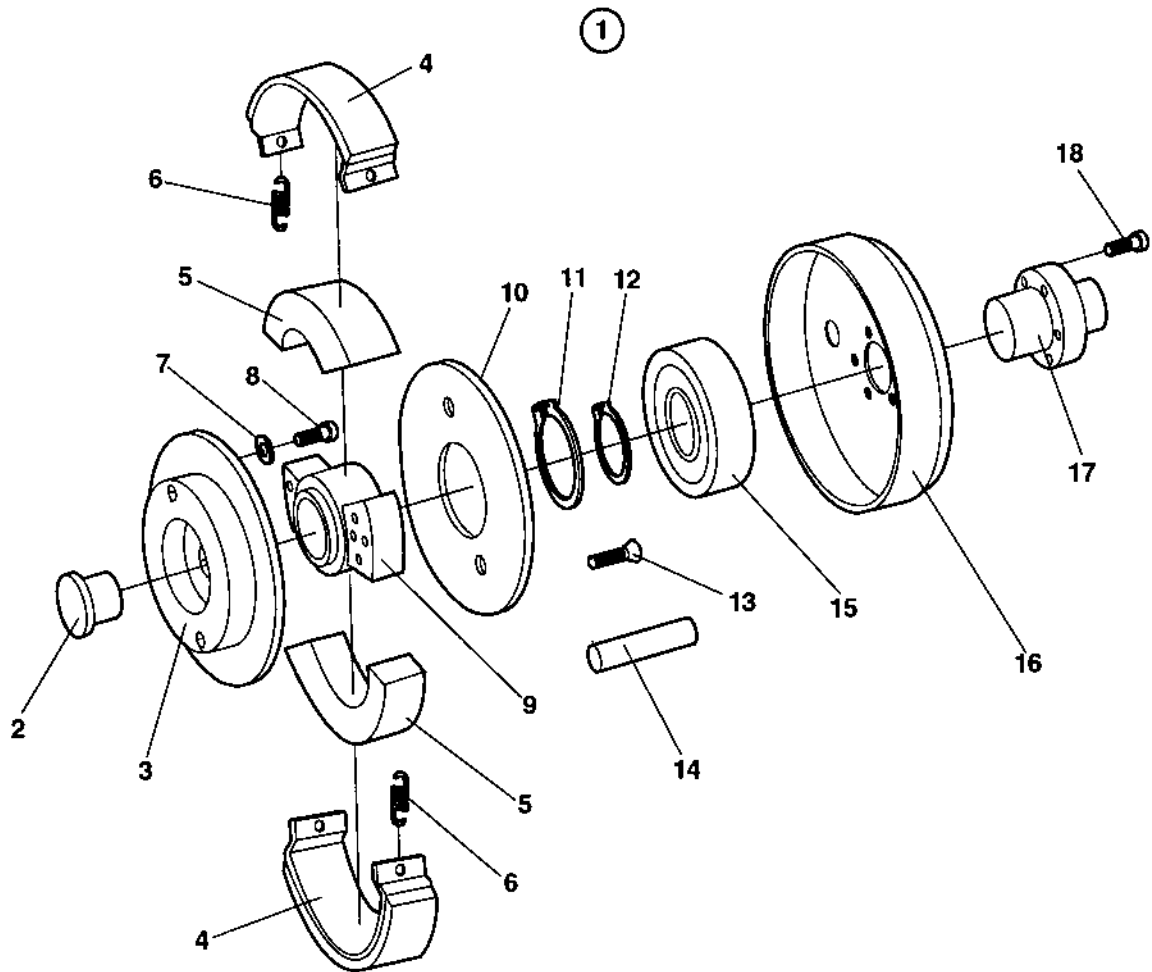
Engine installation, electric started

Item	Part No	Rem	Qty	Description	Code
1			1	Engine plate	
2			1	Engine (Page 22)	Hatz 1D50
3	4700500037		4	Screw	
4	4700904231		4	Washer	13x24x2 300 HV
5	4700791374		4	Nut	
6			1	Centrifugal clutch (Page 30)	
7	4700239923		1	Adapter	
8	4700385518		1	Bracket	
9	4700500027		4	Screw	M10-1,55x22 8.8
10	4700904230		6	Steel plain washer	
11		B	1	Hydraulic oil filter	
12		C	1	Hydraulic pump (Page 40)	Propulsion
13		B	1	Hydraulic pump	
14		D,E	1	Crank handle	
15	4700386320	E	1	Crank holder	
16	4700904532	E	2	Screw	M10x85 8,8
17	4700904230	E	4	Steel plain washer	
18	4700377827	E	2	Spacer	
19	4700586018	E	2	Lock nut	
20	4700396928		1	Protective plate	
21	4700393152		1	Exhaust pipe	
22	4700792120		1	Pipe clamp	

- B) See section hydraulic system
- C) See section hydraulic pump
- D) See section engine
- E) Option

Power transmission

Item	Part No	Rem Qty	Description	Code
10			Centrifugal clutch (Page 30)	



Centrifugal clutch

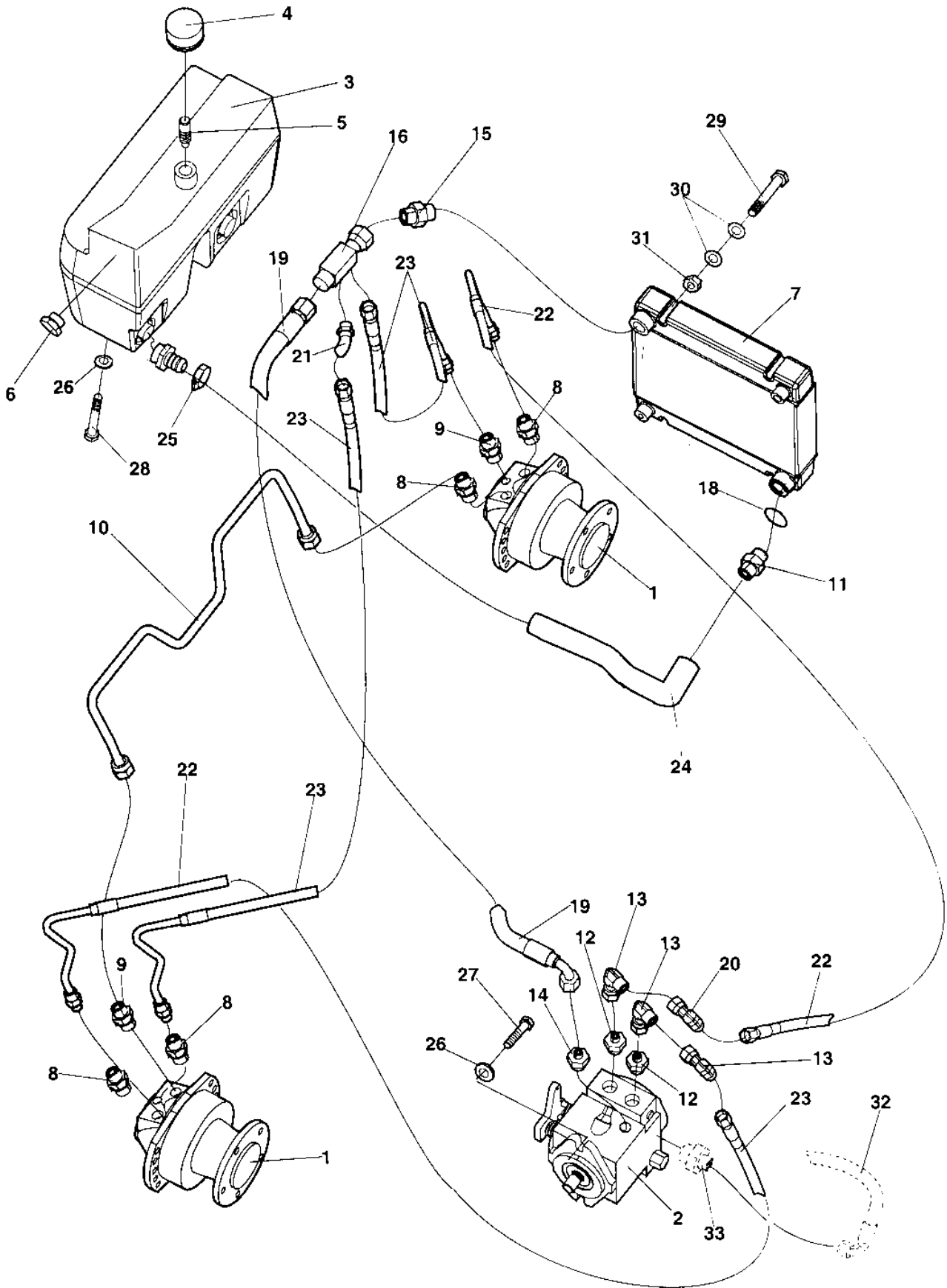
Item	Part No	Rem Qty	Description	Code
1	4700386185	1	Clutch, cpl	
2	4700939115	1	.Plug	
3	4700939116	1	.Flange	
4	4700239932	2	.Lining	B
5	4700939112	2	.Weight	
6	4700421246	2	.Spring	B
7	4700239934	2	.Lock washer	
8	4700939117	2	.Screw	
9	4700938752	1	.Hub	
10	4700936586	1	.Cover	
11	4700937035	1	.Retaining ring	
12	4700937036	1	.Retaining ring	
13	4700937039	4	.Screw	
14	4700239933	4	.Pin	
15	4700937034	1	.Bearing	
16	4700937704	1	.Clutch housing	
17	4700939109	1	.Flange	
18	4700936110	6	.Screw	M6x12

Hydraulic system

Item	Part No	Rem Qty	Description	Code
10			Wheel motor and propulsion pump (Page 34)	
15			Vibration motor and hydraulic pump (Page 36)	
20			Drum motor (Page 38)	
30			Hydraulic pump (Page 40)	Propulsion

Wheel motor and propulsion pump

17605-1



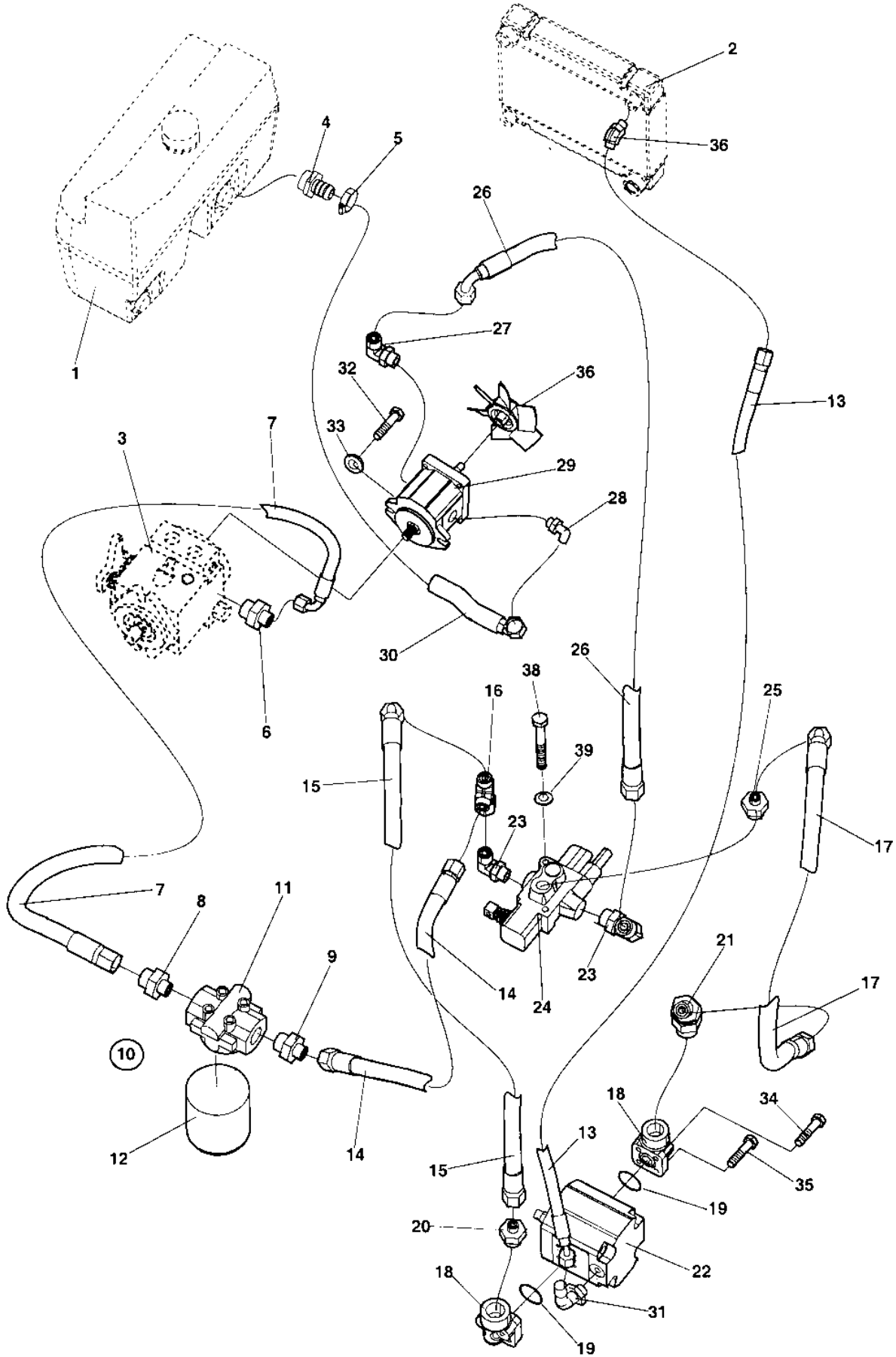
Wheel motor and propulsion pump

Item	Part No	Rem	Qty	Description	Code
1	4700386980		2	Drum motor, Cpl	
2			1	Hydraulic pump (Page 40)	Propulsion
3	4700395374		1	Hydraulic oil tank	
4	4700357138		1	Ventilating filter	A
5	4700386279		1	Splash guard	
6	4700499127		1	Sight plug	
7	4700394362		1	Hydraulic oil cooler	
8	4700791410		4	Straight o-ring connector	
	4700939720		4	.O-ring	
9	4700791409		2	Straight connector orfs	
	4700939719		2	.O-ring	
10	4700386358		1	Hydraulic pipe	
11	4700791419		1	Hose fitting	
12	4700791411		2	Straight o-ring connector	
	4700939529		2	O-ring	
13	4700791401		3	Elbow 90, O-ring with swivel	
	4700939529		3	.O-ring	
14	4700791412		1	Straight o-ring connector	
	4700939720		1	.O-ring	
15	4700791407		1	Straight o-ring connector	
	4700939720		1	.O-ring	
16	4700386666		1	Adapter	
18	4700791418		1	Washer sealing	
19	4700483596		1	Hydraulic hose	
20	4700791402		1	Elbow 45, O-ring with swivel	
	4700939529		1	O-ring	
21	4700791403		1	Elbow 45	
	4700939719		1	.O-ring	
22	4700386359		2	Hydraulic hose	
23	4700386360		2	Hydraulic hose	
24	4700791387		1	Hydraulic hose	
25	4700313006		2	Hose clamp	
26	4700904230		6	Steel plain washer	
27	4700508029		2	Screw	M10-1,5x30H 8,8
28	4700500027		4	Screw	M10-1,55x22 8.8
29	4700500026		4	Screw	M8-1,25x60 8,8
30	4700904229		4	Steel plain washer	
31	4700570005		2	Nut	M8
32		A	1	Hydraulic hose	
33		A	1	Connector	

A) See section Vibration motor, vibration valve, oilfilter and hydraulic pump

Vibration motor and hydraulic pump

17688



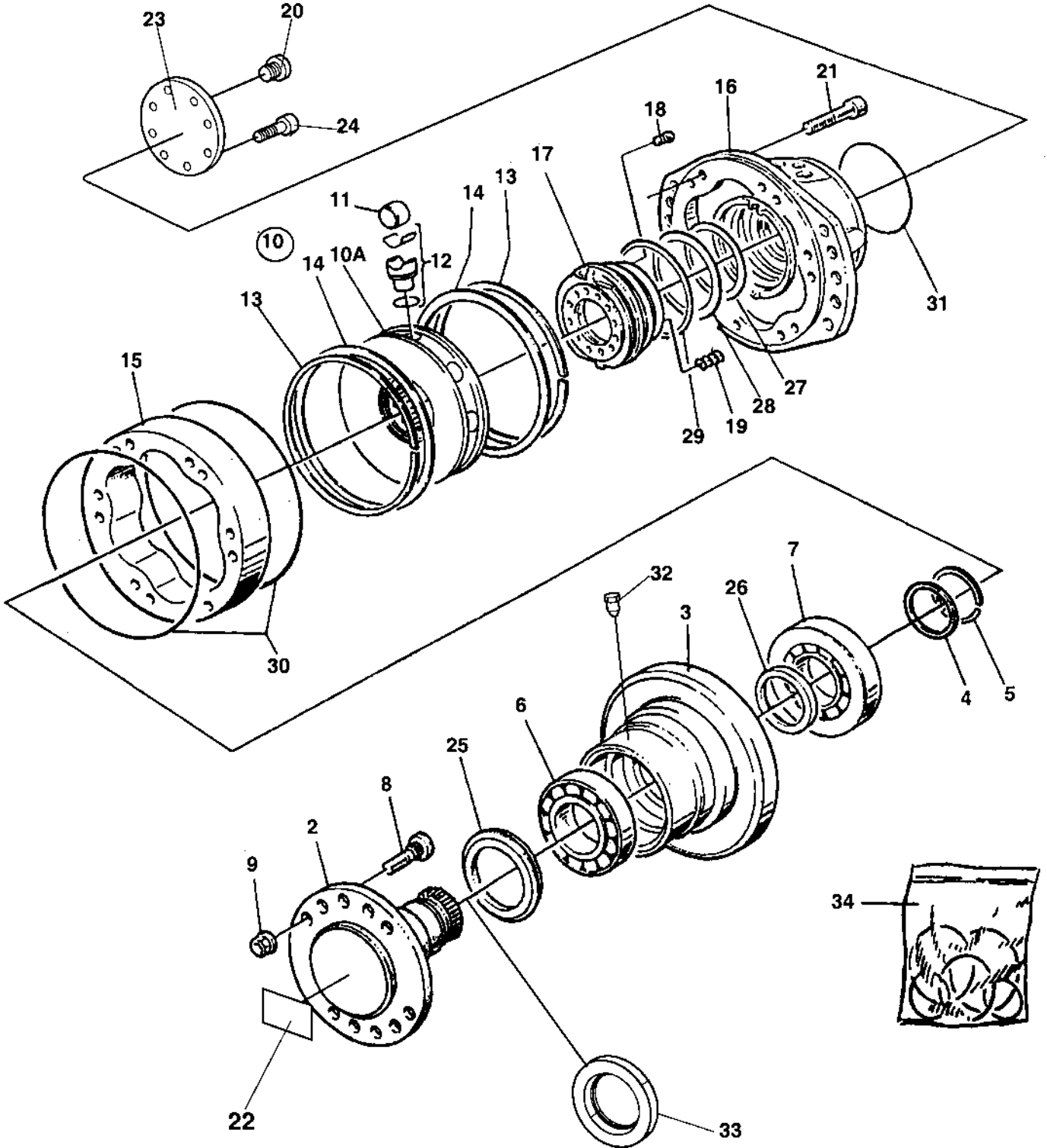
Vibration motor and hydraulic pump

Item	Part No	Rem	Qty	Description	Code
1		A	1	Hydraulic oil tank	
2		A	1	Oil cooler	
3		A	1	Hydraulic pump	Propulsion
4			1	Adapter	
5	4700313007		1	Hose clamp	
6	4700791413		1	Straight o-ring connector	
	4700939720		1	.O-ring	
7	4700483595		1	Hydraulic hose	
8	4700791408		1	Straight o-ring connector	
	4700939720		1	.O-ring	
9	4700791406		1	Straight o-ring connector	
	4700939529		1	.O-ring	
10	4700385514		1	Hydraulic oil filter, cpl	
11	4700385516		1	.Housing	
12	4700385517		1	.Oil filter	A
13	4700483604		1	Hydraulic hose	
14	4700483594		1	Hydraulic hose	
15	4700483593		1	Hydraulic hose	
16	4700791414		1	T-connection, O-ring with swivel	
	4700939529		1	.O-ring	
17	4700483592		1	Hydraulic hose	
18	4700791417		2	Flange fitting	
19	4700160155		2	O-ring	
20	4700791405		1	Straight o-ring connector	
	4700939529		1	.O-ring	
21	4700791416		1	Elbow 45, O-ring	
	4700939529		1	.O-ring	
22	4700384940		1	Hydraulic motor	
23	4700791398		2	Elbow 90, O-ring	
	4700939529		2	.O-ring	
24	4700378579		1	Vibration valve	
25	4700791404		1	Straight o-ring connector	
	4700939529		1	.O-ring	
26	4700483591		1	Hydraulic hose	
27	4700791399		1	Elbow 90, O-ring	
	4700939529		1	.O-ring	
28	4700791400		1	Elbow 90, O-ring	
	4700939729		1	.O-ring	
29	4700384939		1	Hydraulic pump	
30	4700386667		1	Hydraulic hose	
31	4700791397		1	Elbow 90, O-ring	
	4700939719		1	O-ring	
32	4700500037		2	Screw	
33	4700904703		2	Washer	
34	4700791322		4	Screw	
35	4700508025		4	Screw	M6x20
36	4700791415		1	Elbow 45, O-ring	
	4700939719		1	.O-ring	
37	4700382315		1	Fan	
38	4700500026		2	Screw	M8-1,25x60 8,8
39	4700904229		2	Steel plain washer	

A) See section wheel motors, propulsion pump, oil tank and oil cooler

Drum motor

17603



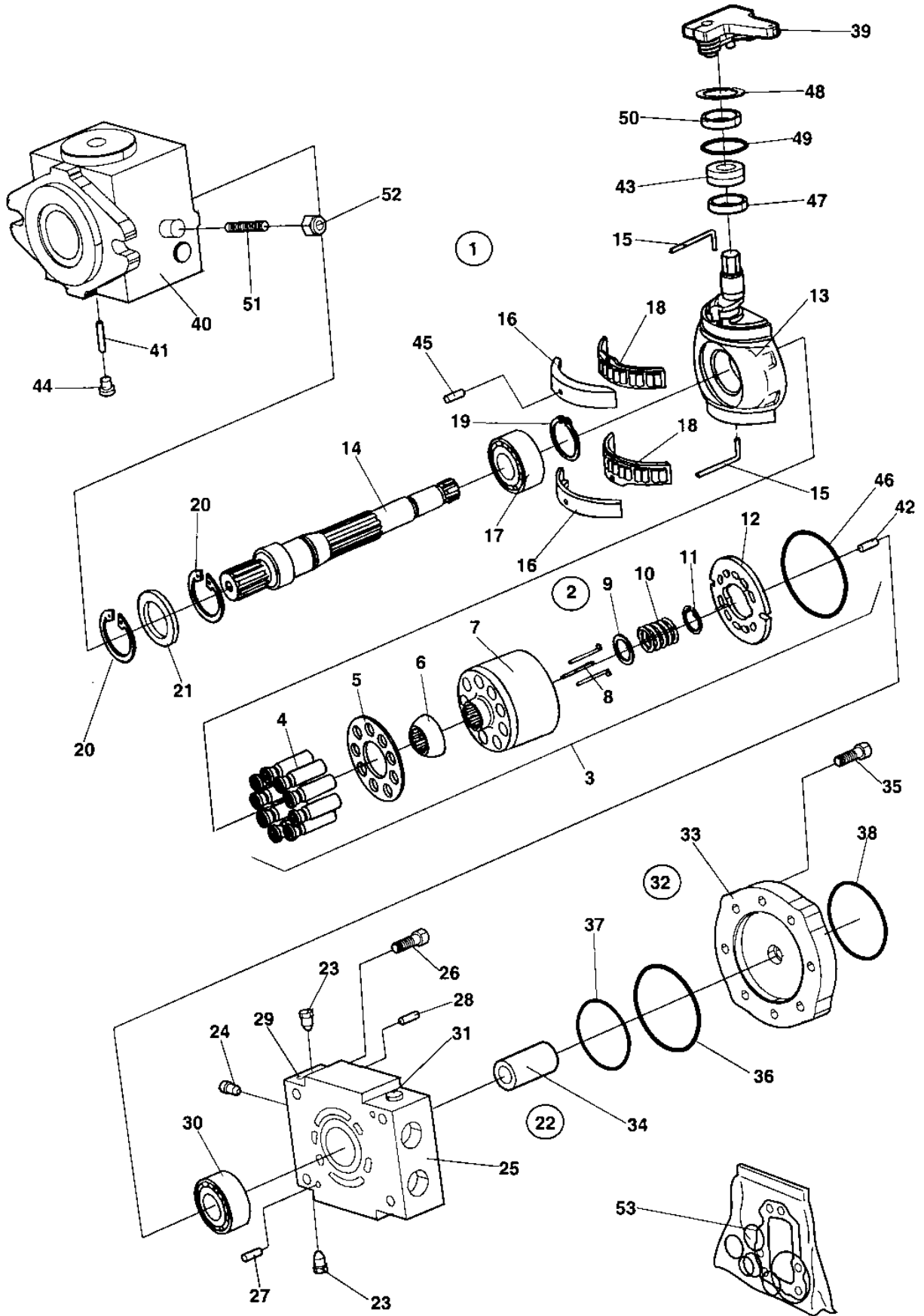
Drum motor

Item	Part No	Rem Qty	Description	Code
1	4700386980	1	Drum motor, Cpl	
2	4700939215	1	.Shaft	
3	4700939216	1	.Housing	
4	4700939378	1	.Shim kit	
		C 1	.Shim	T=1,50 mm
		C 1	.Shim	T=1,65 mm
		C 1	.Shim	T=1,85 mm
		C 1	.Shim	T=2,00 mm
		C 1	.Shim	T=2,15 mm
		C 1	.Shim	T=2,35 mm
5	4700902388	1	.Split ring	
6	4700939217	1	.Bearing	D
7	4700902390	1	.Bearing	D
8	4700902391	5	.Wheel stud	
9	4700902392	5	.Wheel nut	D
10	4700939118	1	.Rotating group, cpl	
10-A		A 1	..Cylinder block	
11	4700903453	8	..Roller	
12		A 8	..Piston	
13	4700937092	2	..Circlip	
14	4700937877	2	..Retaining ring	
15		A 1	..Piston cam	
16		A 1	.Housing	
17	4700937094	1	.Distributor ring	
18	4700902397	1	.Pin	
19	4700902398	9	.Spring	
20	4700902399	1	.Plug	
21	4700902799	6	.Screw	
22	4700902401	1	.Sign	
23	4700939119	1	.End cover	
24	4700939120	8	.Screw	
25		B 1	.Shaft seal	
26		B 1	.Shaft seal	
27		B 1	.Sealing	
28		B 1	.Sealing	
29		B 1	.Sealing	
30		B 2	.O-ring	
31		B 1	.O-ring	
32	4700939219	1	.Plug	
33	4700939218	1	.Spacer	
34	4700939121	1	Seal kit	

- A) Not sold separately
- B) Included in seal kit
- C) Not sold separately, included in shim kit P/N: 4700939378

Hydraulic pump Propulsion

17611

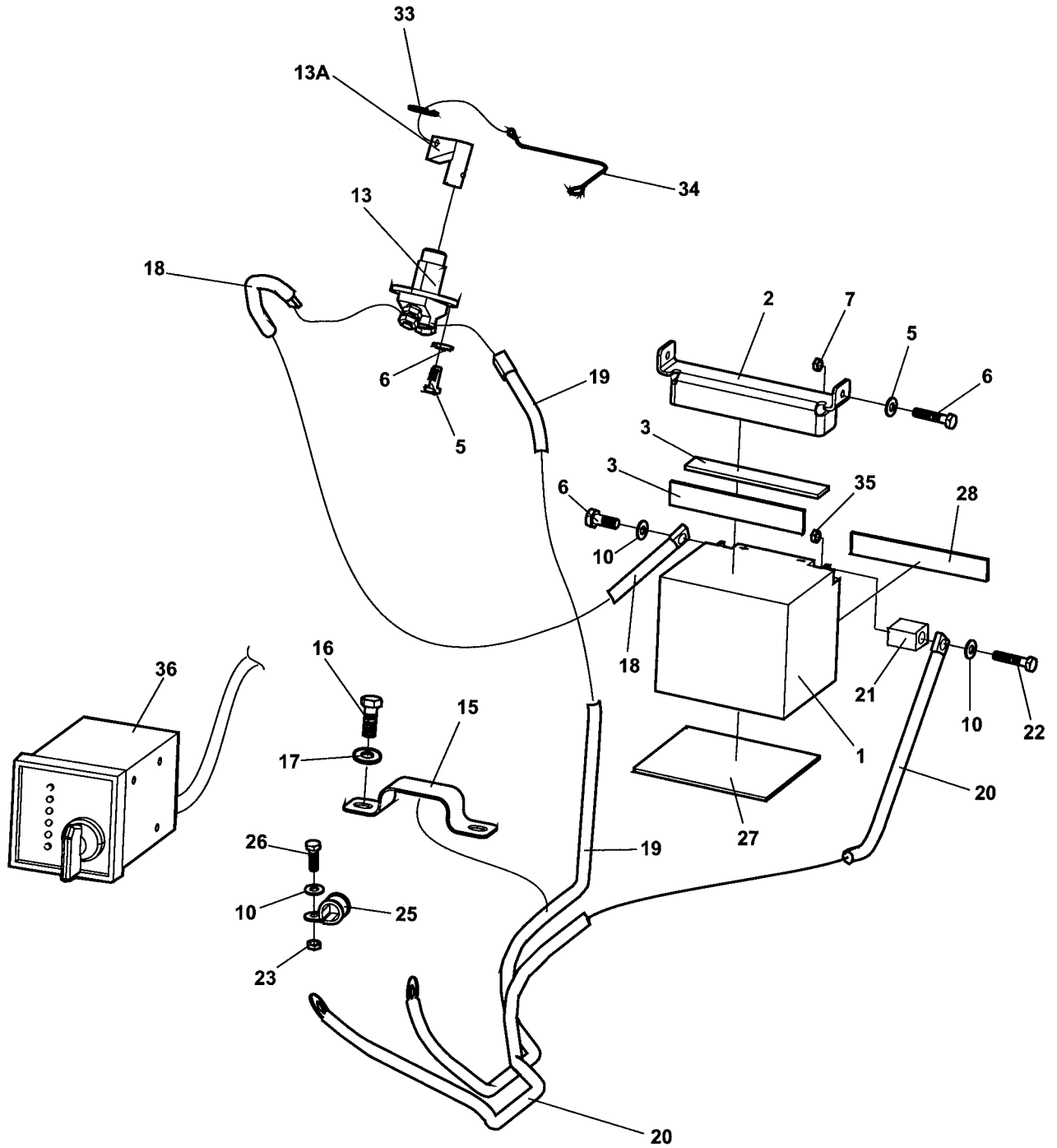


Hydraulic pump Propulsion

Item	Part No	Rem Qty	Description	Code
1	4700387936	1	Hydraulic pump, Cpl	
2		1	.Rotating group, cpl	
3	4700939202	1	..Rotary group, cpl	
4		9	...Not Sold Separately	
5		1	...Not Sold Separately	
6		1	...Not Sold Separately	
7		1	...Not Sold Separately	
8		3	...Not Sold Separately	
9		1	...Not Sold Separately	
10		1	...Not Sold Separately	
11		1	...Not Sold Separately	
12		1	...Not Sold Separately	
13	4700939201	1	..Cradle	
14	4700939203	1	..Shaft	
15	4700939204	2	..Wire	
16	4700939205	1	..Bearing liner	
17	4700939206	1	..Plain roller bearing	
18	4700939207	1	..Cradle bearing assy	
19	4700939208	1	..Retaining ring	
20	4700939209	2	..Retaining ring	
21	4700939210	1	..Seal ring	
22	4700939178	1	.Port plate, cpl	
23	4700939179	2	..Pressure relief valve, cpl	
	4700939211	1	..Pressure relief valve, cpl	
25		1	..Port plate	
26	4700939212	4	..Plug	
27	4700937987	2	..Cylindric pin	
28	4700936307	1	..Double break-off pin	D
29	4700936370	1	..Locking screw	
30	4700939213	1	..Plain roller bearing	
31	4700902625	2	..Screw	
32	4700939172	1	.Pump support plate, cpl	
33	4700939175	1	..Flange	
34	4700939174	1	..Coupling	
35	4700939173	4	..Screw	
36	4700939176	1	..O-ring	
37	4700939177	1	..O-ring	
38	4700936405	1	..O-ring	D
39	4700939170	1	.Control arm, cpl	
40	4700939171	1	.Housing	
41	4700935158	2	.Pin	
42	4700939214	1	.Pin	
43	4700939165	1	.Seal ring	
44	4700936309	1	.Locking screw	
45	4700939169	2	.Pin	
46	4700939168	1	.O-ring	
47	4700939164	1	.Shaft seal ring	
48	4700939167	1	.Retaining ring	
49	4700939166	1	.O-ring	
50	4700939163	1	.Wiper	
51	4700939162	2	.Threaded pin	
52	4700936393	2	.Seal lock nut	
53	4700939185	1	Seal kit	

Electrical equipment

Item	Part No	Rem Qty	Description	Code
10			Electrical equipment (Page 44)	



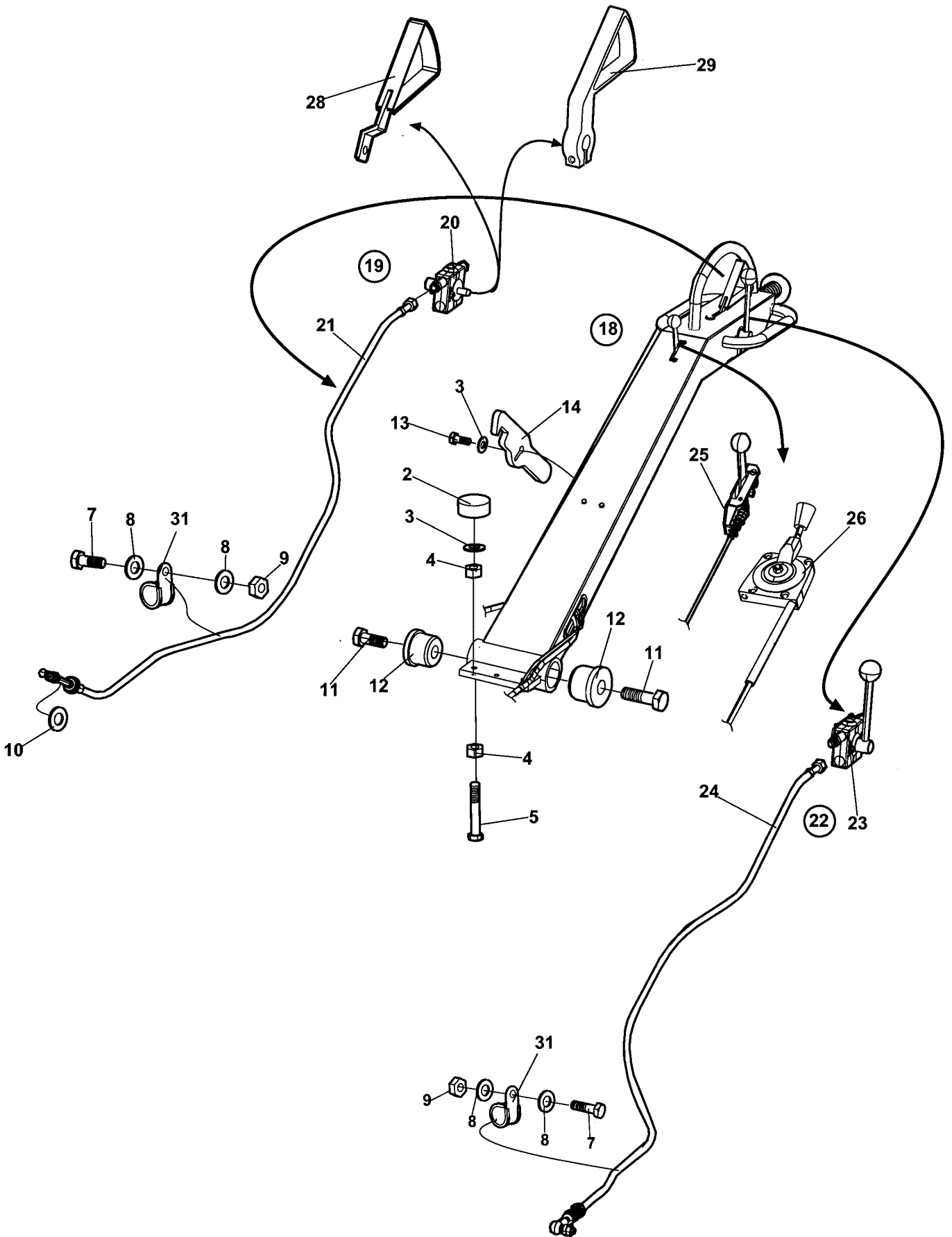
Item	Part No	Rem Qty	Description	Code
1	4700391137	1	Battery	
2	4700385723	1	Battery holder	
3	4700385941	2	Rubber cloth	
5	4700904229	4	Steel plain washer	
6	4700500053	4	Screw	M8x20H 8.8
7	4700570005	2	Nut	M8
10	4700904228	3	Washer	6,4x12x1,5
13	4700357567	1	Battery switch, cpl	D
15	4700384200	2	Clamp	
16	4700500004	4	Screw	M5 0,8x12 8,8
17	4700904281	4	Washer	5,3x10x1 300HV
18	4700791063	1	Connection cable	
19	4700791064	1	Connection cable	
20	4700791065	1	Connection cable	
21	4700391138	1	Spacer	
22	4700500079	1	Screw	M6-1x50 8,8
23	4700570004	1	Hexagon nut	
25	4700921031	1	Clamp	
26	4700500013	2	Screw	M6-1x16 8,8
27	4700385943	1	Rubber cloth	
28	4700385944	1	Rubber cloth	
33	4700358254	1	Key-ring	
34	4700384362	1	Wire	
35	4700570101	2	Nut	M6
36	4700378072	1	Control box	
	4700938146	1	.Ignition switch	
	4700938086	1	.Ignition key	
	4700379028	1	.Dirt shield	

Handle and controls

Item	Part No	Rem Qty	Description	Code
20			Handle with vertical safety bow (Page 48)	
30			Throttle control, old version (Page 50)	
32			Throttle control, new version (Page 52)	
35			Parking brake (Page 54)	

Handle with vertical safety bow

17999-4



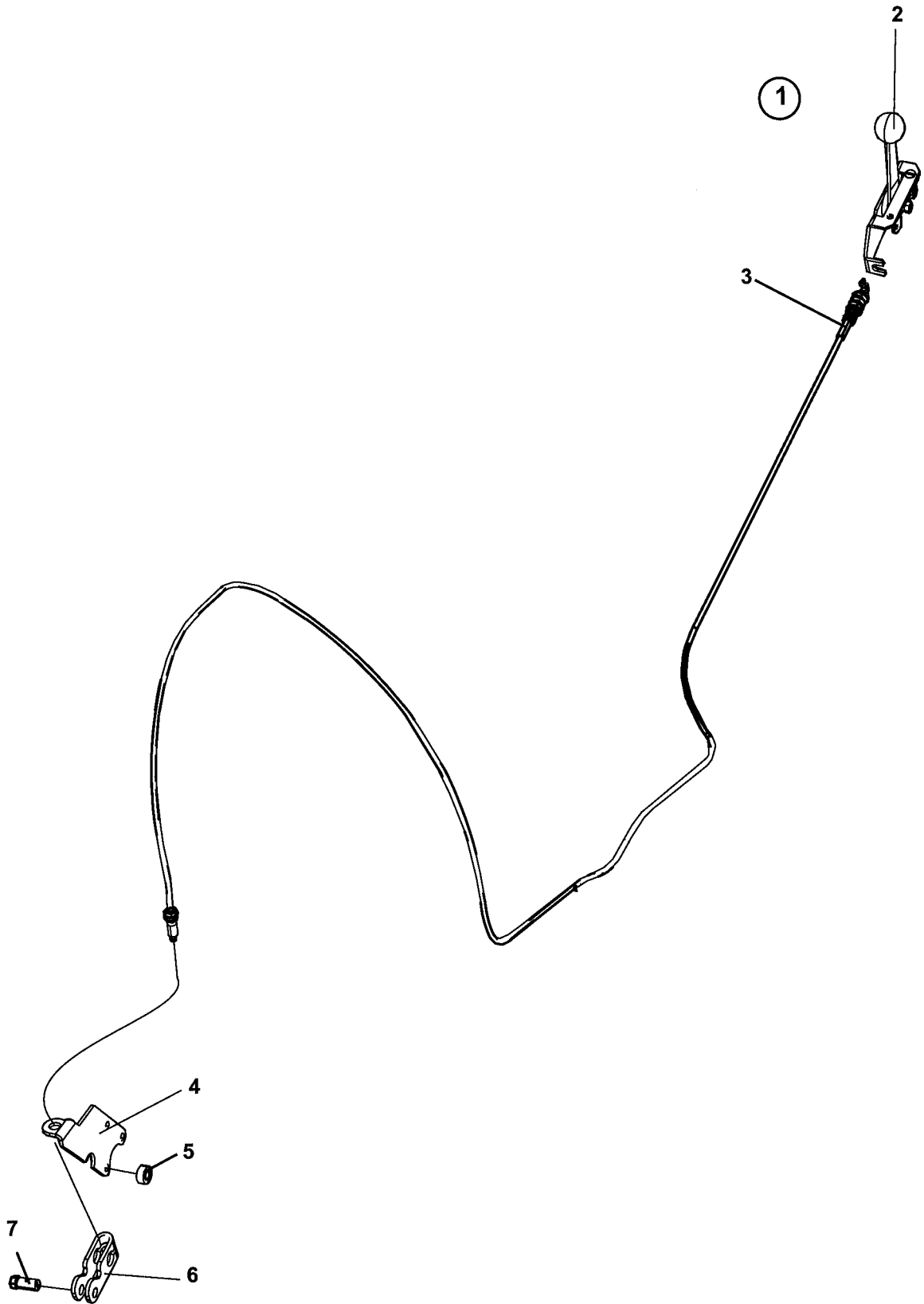
Handle with vertical safety bow

Item	Part No	Rem	Qty	Description	Code
2	4700791373		2	Shock absorber	
3	4700904230		5	Steel plain washer	
4	4700570006		5	Nut	
5	4700791082		2	Screw	
6	4700921039		2	Pipe clamp	
7	4700541703		2	Screw	M6x16
8	4700904228		4	Washer	6,4x12x1,5
9	4700570004		2	Hexagon nut	
10	4700904735		1	Washer	
11	4700382322		2	Screw	
12	4700382321		2	Bushing	
13	4700500027		1	Screw	M10-1,55x22 8.8
14	4700382496		1	Hook	
17	4700385598		1	Lever	
18	D396640-02		1	Handle, cpl	
19	4700940452		1	.Direction control, cpl	
20	4700940500		1	..Handle, cpl	
21	4700940501		1	..Control cable, cpl	
22	4700939126		1	.Vibration control, cpl	
23	4700939560		1	..Handle	
24	4700939561		1	..Control cable, cpl	
25			1	Throttle control, old version (Page 50)	
26			1	Throttle control, new version (Page 52)	
29	4700940786	B	1	Handle	
31	4700921031		2	Clamp	
			1		

B) F/R- control made of aluminium

Throttle control, old version

19025

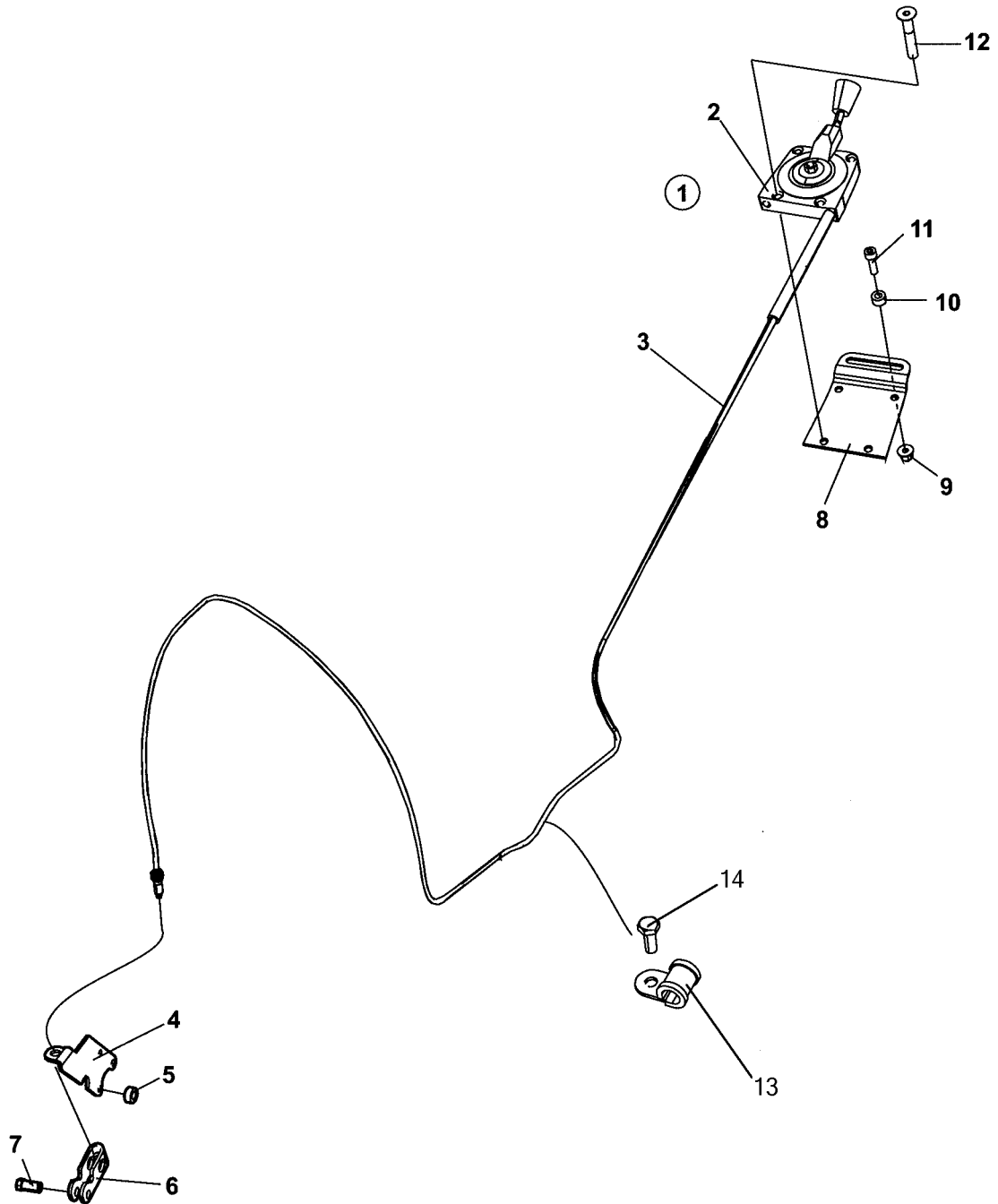


Throttle control, old version

Item	Part No	Rem Qty	Description	Code
1	4700940499	1	Throttle control, cpl	
2	4700940791	1	.Handle	
3	4700940497	1	.Control cable, cpl	
4	4700281228	1	Bracket	
5	4700382166	3	Spacer	
6	4700385598	1	Lever	
7	4700281236	1	Nipple	
		1		

Throttle control, new version

19026

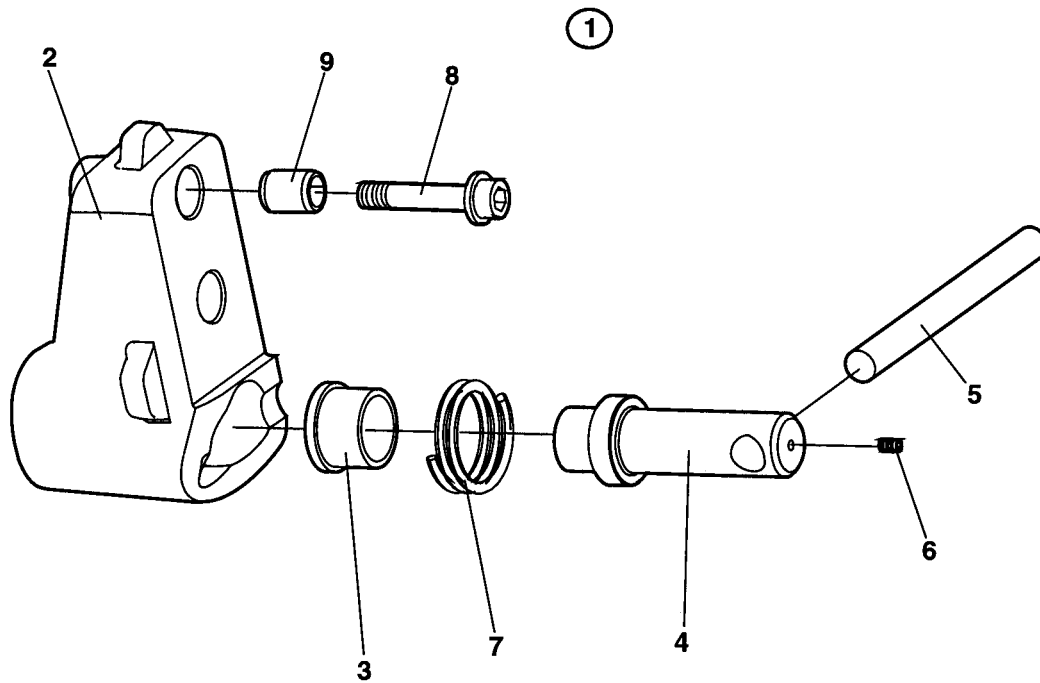


Throttle control, new version

Item	Part No	Rem Qty	Description	Code
1	4700396153	1	Throttle control, cpl	
2	4700397114	1	.Handle	
3	4700396107	1	.Throttle cable	
4	4700281228	1	Bracket	
5	4700382166	3	Spacer	
6	4700385598	1	Lever	
7	4700281236	1	Nipple	
8	4700284365	1	Bracket	
9	4700902285	1	Hexagon lock nut with flange	
10	4700394417	1	Spacer	
11	4700508025	1	Screw	M6x20
12	4700904747	4	Screw	M5X30
13	4700791341	1	Clamp	
14	4700500013	1	Screw	M6-1x16 8,8

Parking brake

17592



Parking brake

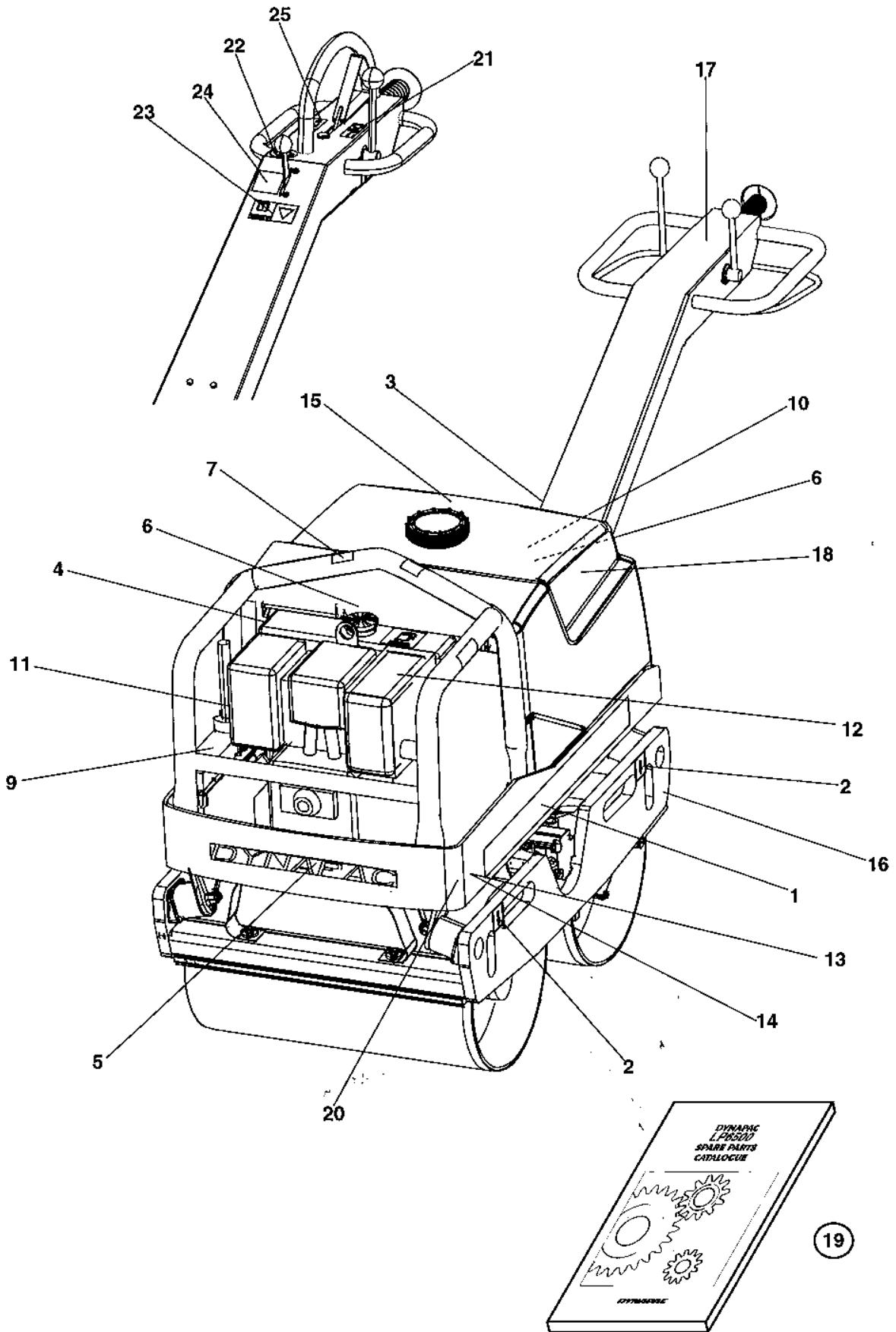
Item	Part No	Rem Qty	Description	Code
1		1	Parking brake, cpl	
2	4700384350	1	.Housing	
3	4700286832	1	.Bushing	
4	4700384351	1	.Shaft	
5	4700384361	1	.Handle	
6	4700516043	1	.Set screw	
7	4700286831	1	.Spring	
8	4700791360	2	Screw	

Decals and documentation

Item	Part No	Rem Qty	Description	Code
10			Decals and documentation (Page 58)	

Decals and documentation

17608-2



Decals and documentation

Item	Part No	Rem Qty	Description	Code
1	4700904069	2	Decal "DYNAPAC"	L=760 mm
2	4700382751	4	Decal "TIE DOWN POINT"	
3	4700791366	1	Safety decal	
4	4700272373	1	Decal "HYDRAULIC OIL"	
5	4700904096	1	Decal "DYNAPAC"	L=420 mm
6	4700903423	2	Decal "SAFETY"	
7	4700357587	2	Decal "LIFT POINT"	
9	4700272516	1	Decal "START"	
10	4700904835	1	Decal "BATTERY POWER"	
11	4700272371	1	Decal "SPRINKLER"	
12	4700903424	1	Decal "HOT SURFACE"	
13	47281270SE	1	Product identification plate CE	
14	4700527002	4	Drive screw	
15	4700271419	1	Decal "WATER"	
16	4700386515	1	Decal "PARKING BRAKE"	
17	4700386535	1	Decal	
18	4700791352	2	Decal "LP6500"	
19		1	Documentation	
		1	.Operation	ILP6500
		1	.Spare parts catalogue	SLP6500
		1	.Warranty registration certificate	
		1	.Warranty conditions	
		1	.CE declaration	
20	4700791295	1	Decal "Sound power level"	107dB
21	4700272381	1	Decal "VIBRATION"	
22	4700281898	1	Decal "Ear protection"	
23	4700904680	1	Decal "Read instruction manual"	
24	4700284285	1	Decal	
25	4700272382	1	Decal "FORWARD/REVERSE"	

